

# Plants



<b>CPL105 LOCAL TREES</b>	Encased selection of bark and seeds from native and foreign species.
<b>CPL113 INFLORESCENCE &amp; CLIMBING PLANT</b>	Encased selection of dried plants.
<b>CPL143 BEECH AND FIR</b>	Examples of beech leaves and mast, and different sorts of fir cones.
<b>CPL155 FOREIGN HARDWOODS</b>	A selection of handleable foreign woods.
<b>CPL192 ASH AND OAK TREES</b>	Examples and photographs.
<b>CPL228 BRITISH AND FOREIGN TIMBER SECTIONS</b>	Encased variety of labelled wood samples.
<b>CPL510 FRUITS AND SEEDS</b>	Examples of fruits and seeds and the trees they come from.
<b>CPL537 USES OF WOOD</b>	Nine different pieces of wood with labels, tree illustrations and text.
<b>CPL569 COMMON FIELD MUSHROOM</b>	A realistic group of model mushrooms.
<b>CPL580 FOREIGN TIMBER</b>	Twelve labelled samples, can be touched.
<b>CPL583 LICHENS</b>	Five examples of lichens on wood and stone with text and a map of the UK.
<b>CPL595 TWO COCONUTS, ONE IN ITS SEEDCASE</b>	Two handleable coconuts with text card.
<b>CPL606 PLANT GALLS</b>	Encased examples of plant sections.
<b>CPL612 BRACKET FUNGI</b>	Encased examples of preserved fungi.
<b>CPL627 THE LIFE CYCLE OF A FERN</b>	Includes models and text.
<b>CIN655 LIFE CYCLE JIGSAW</b>	Set of 4 hand-cut wooden junior jigsaw puzzles. Showing the life cycle of a butterfly, duck, frog and tree.
<b>DPL125 LIFE CYCLE OF A BEAN</b>	Text and pictures of the life cycle of a bean
<b>DPL303 PLANTS AND SEEDS</b>	Laminated spotters guides to different plants and seeds in different settings
<b>PPL016 A AND B: THESE PLANTS ARE POISONOUS</b>	Two posters illustrating dangerous plants.
<b>PPL018 DECIDUOUS WOODLANDS</b>	Trees and fauna of this habitat.
<b>PPL025 THE CHOICE IS OURS: PLANTS, INSECTS, ETC</b>	Four posters depicting animals, birds and plants which need protection.

<b>PPL093</b>	<b>A TO E: TREES</b>	Illustrations of trees, their leaves, flowers and berries.
<b>PPL103</b>	<b>GERMINATION</b>	3 large sized posters illustrating the formation of a seed, the scattering of seeds, pollination and germination and growth of a bean seed.
<b>PPL104</b>	<b>PLANT DEVELOPMENT</b>	4 large posters illustrating leaves, flowers, structure of roots and stems.
<b>PPL117</b>	<b>APPLES</b>	Large poster illustrating a variety of apples.
<b>PPL118</b>	<b>HERBS</b>	Large poster illustrating a variety of herbs.
<b>PPL119</b>	<b>HERBS</b>	Large poster illustrating a variety of herbs.
<b>PPL120</b>	<b>TOMATOES</b>	Large poster illustrating a variety of tomatoes.
<b>PPL121</b>	<b>CROPS</b>	Large poster illustrating a variety of crops including their Latin names and their average height.
<b>VPL012</b>	<b>'THE LIVING ISLES': BRITISH FLORA</b>	A BBC Wildlife Special video about the natural history of Britain.
<b>XPL006</b>	<b>DENDROCHRONOLOGY</b>	Section of a tree, for ring dating.
<b>XPL051</b>	<b>FERNS</b>	Case containing example of fern.
<b>XPL055</b>	<b>MAKING A PENCIL</b>	The different stages of the manufacture of a pencil.
<b>XPL063</b>	<b>MUSHROOMS</b>	Case of different types of mushrooms.

## Mammals

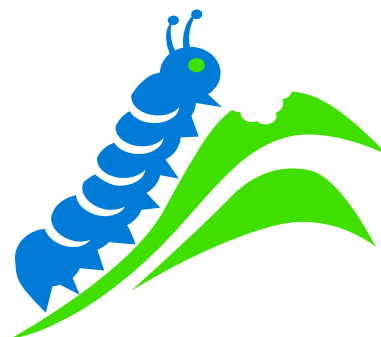


<b>CMA001</b>	<b>BADGER CUB</b>	Large free-standing badger.
<b>CMA011</b>	<b>FOX CUB</b>	Fox cub in an acrylic case.
<b>CMA022</b>	<b>BADGER CUB, ON ITS BACK</b>	Playful cub in an acrylic case.
<b>CMA028</b>	<b>FOXCUB ON ITS BACK, WATCHING A BEE</b>	A playful exhibit in an acrylic case.
<b>CMA043</b>	<b>AMERICAN MINK, ON HIND LEGS</b>	Preserved animal in an acrylic case.
<b>CMA059</b>	<b>FOX CUB, SEATED, ONE PAW RAISED</b>	Preserved infant, in an acrylic case.
<b>CMA063</b>	<b>LIFE CYCLE OF A RABBIT</b>	Wooden life cycle board
<b>CMA127</b>	<b>GREY SQUIRREL</b>	Acrylic case with a squirrel on a tree.

<b>CMA130 TWO YOUNG RABBITS, ON CHALKY SOIL</b>	Standing upright in an acrylic case.
<b>CMA146 RABBIT</b>	A seated rabbit.
<b>CMA168 BLACK SQUIREEL</b>	Black squirrel in a perspex case.
<b>CMA170 GREY SQUIRREL</b>	Squirrel on wooden post, in an acrylic case.
<b>CMA181 GREY SQUIRREL</b>	Grey squirrel holding a nut.
<b>CMA190 INDIAN MONGOOSE, EATING AN EGG</b>	Animal displayed in an acrylic case.
<b>CMA223 VIXEN</b>	Seated Vixen.
<b>CMA225 HARE, SEATED</b>	A case containing a seated hare.
<b>CMA229 BLACK SQUIRREL</b>	Preserved animal in an acrylic case.
<b>CMA505 RED SQUIRREL</b>	Squirrel in an acrylic case.
<b>CMA512 WEASEL</b>	A weasel in an acrylic case.
<b>CMA523 BONES</b>	Selection of handleable mammal bones.
<b>CMA524 SKULLS OF TWO SHEEP</b>	Handleable sheep skulls with teeth.
<b>CMA525 MOLE</b>	A mole in an acrylic case.
<b>CMA529 TEETH FROM ELEPHANT AND COW/HORSE</b>	Set of six handleable teeth.
<b>CMA530 HEDGEHOG EATING BEETLES</b>	Preserved animal in an acrylic case.
<b>CMA531 WEASEL</b>	Small weasel with a bird's egg, in an acrylic case.
<b>CMA533 YOUNG HEDGEHOG WITH A SLUG</b>	Hedgehog eating a slug in an acrylic case.
<b>CMA545 SKULLS OF TWO SHEEP</b>	Two handleable skulls with teeth.
<b>CMA546 BONES</b>	Selection of handleable mammal bones.
<b>CMA549 STOAT IN ERMINE</b>	Preserved stoat on a leaf covered base, in acrylic case.
<b>CMA552 MOLE AND ITS SKELETON</b>	Preserved animal and skeleton in an acrylic.
<b>CMA561 FIELD MICE</b>	Field mice in a Perspex case.
<b>CMA603 BATS: PIPISTRELLE, NOCTULE AND LONG-EARED</b>	Three encased bats, two sleeping, one flying, includes text.
<b>CMA608 TWO HEDGEHOGS: ADULT AND JUVENILE</b>	Two hedgehogs contained in an acrylic case.
<b>CMA624 MOLE AND ITS SKELETON</b>	Preserved exhibits in an acrylic case.
<b>CMA639 PIPISTRELLE BOX</b>	Bat on a branch in an acrylic case.
<b>CMA640 YOUNG HEDGEHOG</b>	A small infant held within an acrylic case.

<b>CMA646 MOLE SKELETON</b>	A mole's skeleton.
<b>CMA654 FOX HEAD</b>	Foxes head displayed in an acrylic case.
<b>DMA157 BRITISH MAMMALS</b>	Twelve, A4 laminated, photographs of British Mammals with teachers notes.
<b>DMA158 BRITISH MAMMALS</b>	Twelve, A4 laminated, photographs of British Mammals with teachers notes.
<b>PMA001 BRITISH WILDLIFE</b>	Pictures of British animals.
<b>PMA003 SHEEP</b>	Large poster illustrating a large variety of sheep including origin and average weights of rams and ewes.
<b>PMA005 CATTLE</b>	Large poster illustrating a large variety of cattle including origin and average weights of bulls and cows.
<b>PMA080 PIGS &amp; GOATS</b>	Large poster illustrating a large variety of pigs and goats including average weights and regions of origin.
<b>VMA017 THE PARENTHOOD GAME</b>	A 'World of Survival' video: courtship and breeding from centipede to lion.
<b>XMA052 BLACK RAT</b>	A rat looking for food in litter, within an acrylic case.
<b>XMA062 STOAT</b>	Stoat on hind legs in an acrylic case.
<b>XMA066 WEASEL</b>	Preserved animal in an acrylic case.
<b>XMA080 STOAT</b>	Stoat nestled in a hollow log.
<b>XMA084 GREY SQUIRREL</b>	Grey squirrel looking upwards on a branch, labelled in an acrylic case.
<b>XMA085 RED SQUIRREL</b>	Red squirrel climbing a branch.
<b>XMA087 FALLOW DEER FAWN, STANDING</b>	Fawn in a large acrylic case.
<b>XMA088 STOAT CATCHING A THRUSH</b>	Dramatic reconstruction – with wings out-stretched – in an acrylic case.

## Insects

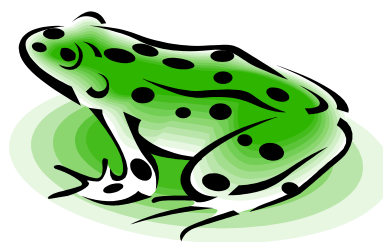


<b>CIN062 LIFE CYCLE OF A LADYBIRD</b>	Wooden life cycle board.
<b>CIN102 HEDGEROW BUTTERFLIES AND THE SMALL COPPER</b>	Twelve preserved butterflies pinned on bark.

<b>CIN112</b>	<b>CHALKLAND BUTTERFLIES AND THE ADONIS BLUE</b>	Encased and pinned with illustrations.
<b>CIN121</b>	<b>COLOURATION IN WASPS AND BEES</b>	Encased collection of insects.
<b>CIN159</b>	<b>TROPICAL MOTHS AND BUTTERFLIES</b>	Encased butterflies and moths displayed with labels.
<b>CIN160</b>	<b>TROPICAL BUTTERFLIES</b>	Ten preserved butterflies pinned on bark squares, encased with labels.
<b>CIN161</b>	<b>INSECTS-PESTS</b>	Case containing pests harmful to crops
<b>CIN184</b>	<b>BEETLES AND BENEFICIAL INSECTS</b>	An encased selection; labelled.
<b>CIN194</b>	<b>TROPICAL BUTTERFLIES</b>	Encased selection of pinned butterflies, with text.
<b>CIN528</b>	<b>INSECTS: A SELECTION</b>	Encased sample of different insects.
<b>CIN543</b>	<b>TYPES OF WASPS</b>	Encased examples of preserved wasps.
<b>CIN557</b>	<b>BEETLES: A SELECTION</b>	A selection of ten different British bees, encased and labelled.
<b>CIN607</b>	<b>MIGRANT MOTHS AND BUTTERFLIES</b>	Seven butterflies pinned to bark squares, with detailed text.
<b>CIN625</b>	<b>TYPES OF BEES</b>	Twelve bees accompanied by text and a diagram of a bee's body.
<b>CIN629</b>	<b>THE PEARL-BORDERED FRITILLARY</b>	Two pinned butterflies, encased with model egg, diagrams and text.
<b>CIN655</b>	<b>LIFE CYCLE JIGSAW</b>	Set of four hand-cut wooden junior jigsaw puzzles. Showing the life cycle of a <b>butterfly</b> , duck, frog and tree.
<b>CIN660</b>	<b>GIANT INFLATABLE INSECTS</b>	Five Giant Inflatable Insects.
<b>CIN663</b>	<b>GIANT INFLATABLE BUTTERFLY LIFE CYCLE</b>	Four Giant inflatables illustrating the butterfly life cycle.
<b>DIN143</b>	<b>LIFE CYCLE OF A BUTTERFLY</b>	Plastic models showing the development of a butterfly from Larva to Adult.
<b>DIN156</b>	<b>MINIBEASTS</b>	'Photopack' containing ten, A4 laminated, photographs, ten, laminated, miniature pictures, one poster and a sixteen page teachers resource book.
<b>DIN160</b>	<b>INSECTS AND SPIDERS</b>	DK book "Insects and Spiders" (2004) by George C. McGavin. Photographic guide in colour, 224 pages.
<b>DIN161</b>	<b>BUTTERFLIES AND MOTHS</b>	DK book "Butterflies and Moths" (2004) by Paul Sterry and Andrew MacKay. Photographic guide in colour, 224 pages.
<b>DIN206</b>	<b>LIFE CYCLE PUZZLES X 4</b>	Four wooden puzzles showing life cycles of Tree, duck, frog and butterfly.
<b>DIN207</b>	<b>BUTTERFLY LIFE CYCLE PUZZLE</b>	A wooden layered puzzle showing the life cycle of the butterfly with notes.

<b>DIN208</b>	<b>LIFE CYCLE MATCH UP GAME</b>	Puzzle game showing life cycles.
<b>DIN210</b>	<b>LIFE CYCLE MODELS (1)</b>	Models showing life cycle of ladybird, frog & butterfly.
<b>DIN211</b>	<b>LIFE CYCLE MODELS (2)</b>	Models showing life cycle of ladybird, frog & butterfly.
<b>DIN212</b>	<b>LIFE CYCLE MODELS (3)</b>	Models showing life cycle of ladybird, frog & butterfly.
<b>PIN024</b>	<b>THE BLUES, COPPERS &amp; HAIRSTREAKS</b>	Labelled illustrations of these butterflies.
<b>PIN035</b>	<b>BUTTERFLIES</b>	Poster showing the life cycle of a butterfly, also shows pictures of different butterflies.
<b>PIN052</b>	<b>A AND B: GARDEN SCAVENGERS</b>	Pictures and text about the growth of various insects.
<b>PIN053</b>	<b>BEEES AND WASPS</b>	Pictures and text about the growth of various bees, wasps and beetles.
<b>PIN054</b>	<b>BEETLES</b>	Illustrations of egg, lava and adult stages.
<b>PIN090</b>	<b>MINIBEASTS</b>	Poster showing information and pictures of Britain's minibeasts.
<b>PIN102</b>	<b>THE BUTTERFLY LIFECYCLE</b>	Large poster illustrating the lifecycle of a butterfly.
<b>VIN021</b>	<b>INSECTS: THE HIDDEN WORLD</b>	A 'World of Survival' video about the insect world.

## Reptiles and Amphibians



<b>CRA148</b>	<b>LIFE CYCLE OF THE FROG</b>	Model of an adult frog and its skeleton.
<b>CRA186</b>	<b>MODEL OF A GRASS SNAKE, SKIN AND SKELETON</b>	Encased model of a snake, plus skin.
<b>CRA518</b>	<b>COMMON FROG AND ITS SKELETON</b>	Model and skeleton of a frog.
<b>CRA567</b>	<b>NEWT AND LIZARD</b>	Four examples of newts and lizards.
<b>CRA587</b>	<b>SLOW-WORM LIZARD AND NEWT</b>	Three life-like models in an acrylic case with labels.
<b>CRA597</b>	<b>MODEL OF A GRASS SNAKE</b>	Touchable model of a snake.
<b>CIN655</b>	<b>LIFE CYCLE JIGSAW</b>	Set of 4 hand-cut wooden junior jigsaw puzzles. Showing the life cycle of a butterfly, duck, <b>frog</b> and tree.
<b>CRA661</b>	<b>GIANT INFLATABLE FROG</b>	Set of 4 inflatables showing the life cycle of a frog.
<b>DRA126</b>	<b>LIFE CYCLE OF A FROG</b>	Picture cards and accompanying information sheets.

<b>DRA142</b>	<b>LIFE CYCLE OF A FROG</b>	Plastic models showing the development of a frog from gilled tadpole to adult frog.
<b>DRA209</b>	<b>FROG LIFE CYCLE PUZZLE</b>	Layered frog life cycle puzzle with notes.
<b>PRA044</b>	<b>A: LIZARDS AND SNAKES B: FROG, TOAD AND NEWTS</b>	Illustrations of all of these.
<b>PRA101</b>	<b>THE FROG LIFECYCLE</b>	Large poster illustrating the life of a frog.
<b>VRA018</b>	<b>REPTILES AND AMPHIBIANS</b>	A National Geographic video.
<b>XRA034</b>	<b>MODEL OF A DISSECTED EARTHWORM</b>	Enlarged plastic model and diagram showing internal organs of a worm.

## Salt & Fresh-Water Life



<b>CSA108</b>	<b>MODEL OF A RED PIRANHA FISH</b>	Encased model of a Piranha fish.
<b>CSA123</b>	<b>A FLYING FISH</b>	Preserved fish displayed as flying.
<b>CSA131</b>	<b>A PUFFER FISH</b>	Large preserved fish in an acrylic case.
<b>CSA187</b>	<b>ANIMALS OF THE SEASHORE</b>	Encased selection of sea creatures.
<b>CSA219</b>	<b>SPONGES</b>	Selection of preserved and skeletal sponges with explanatory text.
<b>CSA540</b>	<b>ANIMALS OF THE SEASHORE</b>	Case with various sea creatures and information.
<b>CSA586</b>	<b>STARFISH AND SEA URCHINS</b>	Encased delicate sea creatures.
<b>CSA602</b>	<b>CORALS</b>	Five different pieces of coral, encased with text and labels.
<b>CSA630</b>	<b>SHELLS FROM TROPICAL SEA CREATURES</b>	Seven encased shells with explanatory text.
<b>CSA637</b>	<b>SEASHELLS</b>	Shells for handling.
<b>DSA184</b>	<b>A PUFFER FISH (1)</b>	A small puffer fish in an acrylic case, with info sheets.
<b>DSA185</b>	<b>A PUFFER FISH (2)</b>	A small puffer fish in an acrylic case, with info sheets.
<b>DSA186</b>	<b>A PUFFER FISH (3)</b>	A small puffer fish in an acrylic case, with info sheets.
<b>DSA187</b>	<b>A PUFFER FISH (4)</b>	A small Puffer fish in an acrylic case, with info sheets.
<b>DSA217</b>	<b>BRITISH &amp; TROPICAL SHELLS</b>	Nine x shells for handling plus info.
<b>PSA028</b>	<b>RIVER &amp; POND LIFE</b>	Poster showing inhabitants of rivers and ponds.
<b>XSA011</b>	<b>MODEL OF A RUDD</b>	Mounted model of the fish, with text.

<b>XSA038</b>	<b>TROPICAL CORALS</b>	Seven pieces of delicate coral, labelled, plus text.
<b>XSA060</b>	<b>SHELLS OF A TORTOISE AND A TERRAPIN</b>	Encased shells with text and labels.
<b>XSA083</b>	<b>A PUFFER FISH</b>	Preserved fish in an acrylic case.
<b>XSA095</b>	<b>MODELS OF TENCH &amp; COMMON TROUT</b>	Encased relief models, labelled

## Birds



<b>CBI004</b>	<b>ADELIE PENGUIN</b>	Upright exhibit in an acrylic case.
<b>CBI007</b>	<b>TWO BARN OWLS</b>	Two owls on a branch in an acrylic case.
<b>CBI013</b>	<b>MAGPIE, WINGS OUTSTRETCHED</b>	Bird in dramatic pose in an acrylic case.
<b>CBI016</b>	<b>TAWNY OWL</b>	Large bird displayed in an acrylic case.
<b>CBI021</b>	<b>CURLEW</b>	Large preserved bird searching for food.
<b>CBI040</b>	<b>TAWNY OWL, WINGS OUTSTRETCHED</b>	Bird displayed in an acrylic case.
<b>CBI044</b>	<b>GREEN WOODPECKER</b>	Bird displayed in an acrylic case.
<b>CBI046</b>	<b>MAGPIE</b>	Preserved bird on a branch in an acrylic case.
<b>CBI050</b>	<b>KESTREL</b>	Female kestrel perched on post in an acrylic case.
<b>CBI056</b>	<b>MOORHEN</b>	Preserved bird in defensive pose.
<b>CBI111</b>	<b>BLUE TIT, GREAT TIT AND COLE TIT</b>	Birds in woodland setting.
<b>CBI115</b>	<b>LONG-EARED OWL</b>	Encased owl with photo and text.
<b>CBI126</b>	<b>FIELDFARE</b>	Fieldfare sitting on a branch.
<b>CBI128</b>	<b>COOT</b>	Large coot on a bed of reeds.
<b>CBI129</b>	<b>RED LEGGED OR FRENCH PARTRIDGE</b>	Preserved bird displayed on a soil base in an acrylic case.
<b>CBI134</b>	<b>SWIFT, WINGS OUT STRETCHED</b>	Preserved flying bird in an acrylic case.
<b>CBI136</b>	<b>WOOD PIGEON</b>	Preserved bird on soil base in acrylic case.
<b>CBI140</b>	<b>TAWNY OWL</b>	Preserved and displayed on a tree stump.
<b>CBI149</b>	<b>BARN OWL</b>	Preserved owl standing on a gate post.



<b>CBI163</b>	<b>KESTREL</b>	Mounted kestrel on a background.
<b>CBI172</b>	<b>JAY</b>	Preserved bird on a wooden stump in an acrylic case.
<b>CBI196</b>	<b>GREEN WOODPECKER</b>	A bird on a wooden stump, in an acrylic case.
<b>CBI221</b>	<b>GREAT TIT AND FEMALE CHAFFINCH</b>	Specimens in a case, great tit with wings outstretched.
<b>CBI230</b>	<b>BIRDS' EGGS</b>	Selection of birds' eggs, from the Great Tit to the Coot.
<b>CBI513</b>	<b>BLACKBIRD</b>	Bird displayed in acrylic case.
<b>CBI516</b>	<b>GOLDEN ORIOLE</b>	Preserved bird on a branch, in an acrylic case.
<b>CBI555</b>	<b>CHAFFINCH AND BULLFINCH</b>	Two preserved birds in an acrylic case.
<b>CBI559</b>	<b>ROBINS: ADULT AND JUVENILE</b>	Two robins in an acrylic case, displayed on a woodland base.
<b>CBI562</b>	<b>SONG THRUSH</b>	Preserved bird in an acrylic case.
<b>CBI566</b>	<b>BIRD NEST, ROBIN</b>	Preserved in an acrylic case.
<b>CBI571</b>	<b>A CHICK OF THE DOMESTIC HEN</b>	Infant chick in an acrylic case.
<b>CBI574</b>	<b>WREN</b>	Preserved bird in an acrylic case.
<b>CBI578</b>	<b>CUCKOOS</b>	Two encased birds in natural setting.
<b>CBI581</b>	<b>WAXWING, FIELDING AND BRAMBLING</b>	Three encased birds in natural setting.
<b>CBI653</b>	<b>BIRDS NEST</b>	Chaffinch birds nest.
<b>CIN655</b>	<b>LIFE CYCLE JIGSAW</b>	Set of 4 hand-cut wooden junior jigsaw puzzles. Showing the life cycle of a butterfly, <b>duck</b> , frog and tree.
<b>DBI127</b>	<b>LIFE CYCLE OF A CHICKEN</b>	Picture Cards and Information Sheets.
<b>DBI155</b>	<b>BIRDS</b>	12 x laminated photographs of different birds with info.
<b>PBI006</b>	<b>POULTRY AND WATERFOWL</b>	A large poster illustrating a large variety of poultry and waterfowl including their region of origin.
<b>PBI020</b>	<b>BRITAINS WETLANDS</b>	The different wetlands & the animals that inhabit them.
<b>VBI013</b>	<b>BIRD BRAIN OF BRITAIN /FLYING GOURMET</b>	A BBC Wildlife Special video on how clever birds can be and what they eat.
<b>VBI014</b>	<b>TITBITS AND NIGHT-LIFE</b>	A BBC Wildlife Special video on the Blue Tit and on Foxes.
<b>XBI001</b>	<b>BIRDS' FEET</b>	A selection of birds' feet, with explanatory text.
<b>XBI007</b>	<b>BIRDS' SKULLS</b>	Six encased birds' skulls, labelled.
<b>XBI015</b>	<b>BIRDS' FEET</b>	Encased selection, includes webbed examples.

<b>XBI016</b>	<b>BIRDS' FEATHERS</b>	An encased selection of feathers from a variety of birds.
<b>XBI041</b>	<b>BIRDS' HEADS AND FEET</b>	Seven encased bird heads, also with feet accompanied by text.
<b>XBI061</b>	<b>LAPWING</b>	A bird standing on a rock, in a acrylic case.
<b>XBI075</b>	<b>BRAMBLING</b>	Preserved bird in winter plumage.
<b>XBI076</b>	<b>JACKDAW</b>	Jackdaw perched on branch in acrylic case.
<b>XBI104</b>	<b>JAY, WINGS OUTSTRETCHED</b>	Preserved bird in an acrylic case.

## Anatomy



<b>CAN103</b>	<b>HUMAN LEG SKELETON</b>	Model of human leg skeleton.
<b>CAN162</b>	<b>HUMAN HAND AND ARM SKELETONS</b>	Model of human hand and arms, with the bones identified.
<b>CAN204</b>	<b>HUMAN SKELETON</b>	Sixty centimetre high model of the human skeleton.
<b>CAN205</b>	<b>SKELETON, 60cms.</b>	Model skeleton, on a hanging stand.
<b>CAN207</b>	<b>HUMAN SKELETON</b>	A miniature model skeleton held on a stand, handleable.
<b>CAN208</b>	<b>HUMAN SKELETON</b>	A miniature skeleton model- handleable.
<b>CAN218</b>	<b>MODEL OF A HUMAN EYE</b>	Large model of a human eye.
<b>CAN521</b>	<b>MODEL OF A HUMAN EAR</b>	Including the middle and inner ear.
<b>CAN535</b>	<b>HUMAN FEET SKELETONS</b>	Model of human foot, cross-section of a foot, and skeleton of a foot.
<b>CAN564</b>	<b>MODEL OF THE HEART</b>	Display model that can be pieced together and handled.
<b>CAN570</b>	<b>MODEL OF A HUMAN EAR</b>	Including the middle and inner ear.
<b>CAN601</b>	<b>A HUMAN TORSO</b>	Anatomically accurate model of a human torso with removable organs.
<b>CAN605</b>	<b>MODEL OF THE SKIN</b>	Model, diagram and explanatory text.
<b>CAN609</b>	<b>A HUMAN TORSO</b>	Anatomically accurate model of a human torso with removable organs.
<b>CAN610</b>	<b>SKELETON OF A HUMAN LEG</b>	Handleable skeleton of human leg with key to muscles and bones.

**CAN664 A HUMAN TORSO**  
**DAN040 THE HUMAN BODY**

Anatomically correct model of human torso + Booklet  
Three British Museum booklets.

**DAN148 UNCOVER THE HUMAN BODY**

A three-dimensional book looking at the inside of a human body.

**PAN008 A-D. THE HUMAN PRIMATE**

Four posters with text describing how humans have evolved.

## Archaeology



**CAY264 TIMELINE DETECTIVES**

Contains items which can be used to demonstrate the layers of Archaeological finds- includes a plastic bottle on the top, more recent layer right down to flint and bronze on the bottom layer.

**PAY066 ARCHAEOLOGY**

How to be an archaeologist, fun games

**VAY023 THE ARCHAEOLOGICAL DETECTIVES**

An English Heritage video about how archaeologists work.

**VAY038 ARCHAEOLOGY AT HARTSFIELD SCHOOL, BALDOCK**

An in-house video about archaeological excavations inside the school.

**VAY040 WORKING ON A LOCAL HISTORY STUDY**

An English Heritage video.

## Stone Age Cultures



**DST008 CAVE PAINTINGS: LASCAUX, EYZIES**

Ten photographs, also show rock formations.

**PST027 THE LAST GLACIATION**

Pictures and text about the last Ice Age.

**XST003 WEAPONS**

Includes axe, arrow-heads and information.

**XST004 TOOLS**

Engraving tools, hammer heads and scrapers for cleaning skins, with information.

**XST039 FLINT AND THE DEVELOPMENT OF TOOLS**

Encased selection of flint tools.

<b>XST046 HUNTERS</b>	Text on Stone Age hunters plus examples of stone tools.
<b>XST047 NEOLITHIC POTTERY</b>	Encased fragments of Neolithic pottery with diagrams and text.
<b>XST054 PALAEOLOGIC MAN AND HIS WAY OF LIFE</b>	Model of man making fire, and a variety of replica and original tools.
<b>XST098 TOOLS AND WEAPONS</b>	Prehistoric handleable selection.
<b>XST100 TOOLS AND WEAPONS</b>	Handleable prehistoric and modern stone tools and weapons, with explanatory text.
<b>CST679 STONE AGE TO BRONZE AGE (1)</b>	Handleable objects used in the stone age to bronze age plus info sheets
<b>CST680 STONE AGE TO BRONZE AGE (2)</b>	Handleable objects used in the stone age to bronze age plus info sheets
<b>CST681/ STONE AGE TO BRONZE AGE (3) 2/</b>	Handleable objects used in the stone age to bronze age plus info sheets
<b>DST301 STONE AGE ART</b>	Laminated colour photos of stone age art x4A4 Photos x7 small laminated post cards from the British museum and one resin copy of a sculpture
<b>DST302 STONE AGE ART</b>	Laminated colour photos of LASCAUX x4A4 Photos x7 small laminated post cards from the British museum and one resin copy of a sculpture
<b>DST303 LASCAUX</b>	x4 A4 Photos x7 small laminated photos from the caves
<b>DST304 Lascaux</b>	x4 A4 Photos x7 small laminated photos from the caves

## Ancient Egypt



<b>CAE104 A. RELIGION AND THE GODS B. IN THE GRAVE</b>	Pottery, pendants and shabti, with postcards.
<b>CAE138 A. IN THE KITCHEN B. JEWELLERY</b>	Examples of Ancient Egyptian pottery and jewellery, with postcards and information.
<b>CAE178 FUNERALS IN EGYPT</b>	Encased artefacts relating to ancient funeral customs.
<b>CAE195 EGYPTIAN TECHNOLOGY: POTTERY</b>	An encased selection of clay objects with text and photographs.

<b>CAE251</b>	<b>STAGES OF MUMMIFICATION</b>	Four plaster models showing the different stages of mummification.
<b>CAE253</b>	<b>EGYPTIAN WRITING</b>	Rosetta stone, reed pens, pen case, alphabet stone, Eight x papyrus sheet plus info sheets.
<b>CAE257</b>	<b>STAGES OF MUMMIFICATION</b>	Four x Models showing stages of mummification, 1 x blue shabti, 1 x info sheet.
<b>CAE584</b>	<b>CUNEIFORM WRITING</b>	Objects and examples of the earliest form of writing, with information.
<b>CAE590</b>	<b>HIEROGLYPHS</b>	Objects with hieroglyphs, and explanation.
<b>CAE649</b>	<b>EGYPTIAN LIFE AND DEATH</b>	Replica items connected with Life and Death in Ancient Egypt with information sheet.
<b>DAE042</b>	<b>BURIAL CUSTOMS IN ANCIENT EGYPT</b>	Twelve pictures with explanations.
<b>DAE043</b>	<b>ANIMALS IN ANCIENT EGYPT</b>	Eight pictures, with explanations.
<b>DAE044</b>	<b>PEOPLE IN ANCIENT EGYPT</b>	Sixteen pictures with explanations.
<b>DAE051</b>	<b>EGYPTIAN LANGUAGE AND WRITING</b>	Text, illustrations, examples of papyrus and hieroglyphics.
<b>DAE102</b>	<b>ANCIENT EGYPT</b>	Spiral-bound A4 booklet on many aspects of Ancient Egypt and 13 image cards.
<b>DAE105</b>	<b>AN EGYPTIAN TOMB</b>	One "Look Inside" booklet, a Funerary Stele pack and a piece of painted papyrus.
<b>DAE110</b>	<b>EGYPTIAN WRITING</b>	Three samples of papyrus, two leaflets on making papyrus and the Hieroglyphic alphabet, five postcards.
<b>DAE146</b>	<b>FUN WITH HIEROGLYPHS</b>	British Museum pack showing Hieroglyph Alphabet Chart, containing 24 Hieroglyph stamps and a booklet 'Fun with Hieroglyphs' and 2 copies of 'The Tale of Peter Rabbit' in English and Hieroglyph.
<b>DAE147</b>	<b>FUN WITH HIEROGLYPHS</b>	British Museum pack showing Hieroglyph Alphabet Chart, containing 24 Hieroglyph stamps and a booklet 'Fun with Hieroglyphs' and Two copies of 'The Tale of Peter Rabbit' in English and Hieroglyph.
<b>DAE188</b>	<b>ANCIENT EGYPTIAN LIVES</b>	Book, papyrus, pendant & Hieroglyphic alphabet sheet.
<b>DAE201</b>	<b>ANCIENT EGYPT: LIFE &amp; CUSTOMS</b>	Resource book & pictures on the ancient Egyptians.
<b>DAE202</b>	<b>ANCIENT EGYPT RESOURCES</b>	Three x Fact & resource books on the Ancient Egyptians
<b>DAE213</b>	<b>HIEROGLYHS</b>	Fun with hieroglyphs stamps & inepad plus 2 beatrix potter books, one English, 1 Hieroglyphic version.
<b>DAE216</b>	<b>HIEROGLYPHS- EGYPT</b>	Fun with Hieroglyphs book with stamps & ink, 2 x Beatrix potter books 1 in English, 1 Hieroglyphic version.

<b>PAE085</b>	<b>SPHINX AND THE PYRAMID</b>	Poster of the Great Sphinx of Giza and Cheops' Pyramid.
<b>PAE094</b>	<b>THE ROSETTA STONE</b>	Illustration of the Rosetta Stone, with text about its importance.
<b>PAE099</b>	<b>ANCIENT EGYPT</b>	Colour poster comprising timelines, images and text.
<b>VAE056</b>	<b>TUTANKHAMUN</b>	A Discovery Channel Programme DVD, Exploring the life and death of the Boy-King.
<b>VAE057</b>	<b>TUTANKHAMUN</b>	A Discovery Channel DVD, Exploring the life and death of the Boy-King.
<b>VAE058</b>	<b>THE REAL CLEOPATRA</b>	A Discovery Channel DVD, Telling the true story of Cleopatra.
<b>VAE059</b>	<b>RAMSES THE GREAT</b>	A Discovery Channel DVD, Looking at the life of the popular ruler.
<b>VAE072</b>	<b>ANCIENT EGYPT &amp; THE PHARAOHS</b>	DVD showing graphic chronology of Ancient Egypt

## Bronze Age



<b>XBR048</b>	<b>MODEL OF STONEHENGE, MID BRONZE AGE</b>	Model, drawings, contemporary photographs, two booklets and information sheet.
<b>XBR056</b>	<b>POTTERY</b>	Pottery fragments, photographs, drawings, and explanatory text about use.
<b>XBR059</b>	<b>METALWORKING</b>	Examples of Bronze Age axes; brief explanation of their manufacture.

## Classical Greece



<b>CCG110</b>	<b>MODEL OF MERCHANTS' HOUSE, PRIENE 4th CENTURY BC</b>	A simple model of an ancient home.
<b>CCG164</b>	<b>HEAD OF A YOUNG WOMAN, ETRUSCAN</b>	Sandstone sculpture, just under life-size.

<b>CCG188</b>	<b>MODEL OF A DORIC TEMPLE, 5th CENTURY BC</b>	Model of a Doric temple, with card explaining the orders of columns.
<b>CCG193</b>	<b>LIFE IN ANCIENT GREECE (1)</b>	Objects and illustrations showing warfare.
<b>CCG240</b>	<b>KNOSSOS</b>	Model of Knossos.
<b>CCG252</b>	<b>GREEK SPORT &amp; LIFE</b>	Model hoplite helmet, three x model Greek columns, two x longjump weights
<b>CCG254</b>	<b>GREEK THEATRE &amp; LIFE</b>	Two examples of Greek theatrical masks, four x Greek coins, one x Greek oil lamp + info.
<b>CCG256</b>	<b>GREEK GODS &amp; HOME</b>	Greek lamp and vase, and two x small Greek models
<b>CCG579</b>	<b>GREEK POTTERY</b>	Examples of Greek pottery in an acrylic case with information.
<b>CCG623</b>	<b>THE GREEK THEATRE</b>	Decorative Greek heads and plaque with information, for handling.
<b>CCG656</b>	<b>LIFE IN ANCIENT GREECE (2)</b>	Replica vase, Parthenon frieze, Greek Owl and Horse.
<b>DCG041</b>	<b>DAILY LIFE IN ANCIENT GREECE</b>	Written information exploring the life of an ancient civilisation.
<b>DCG103</b>	<b>GREEK THEATRE</b>	A 'Look Inside' booklet about the Greek theatre.
<b>DCG122</b>	<b>CLASSICAL GREECE</b>	Nine information sheets and a pack of British Museum Greek cards.
<b>DCG124</b>	<b>ANCIENT GREECE</b>	16 Page Booklet , A3 Colour Poster & info cards on ancient Greeks.
<b>DCG173</b>	<b>THE ANCIENT GREEK WORLD</b>	Book, Map and postcards illustrating Ancient Greek life.
<b>DCG189</b>	<b>ANCIENT GREEKS</b>	Four x Greek coins in pack, six x Greek postcards, one x Explore history book 'Ancient Greece'.
<b>DCG190</b>	<b>OLYMPIC GAMES</b>	One x Book 'The Olympic games miscellany' One x Book 'Official Olympic 2012 games book'.
<b>DCG191</b>	<b>OLYMPIC GAMES (2)</b>	One x Book 'The Olympic games miscellany' One x Book 'Official Olympic 2012 games book'.
<b>DCG192</b>	<b>HISTORY OF THE OLYMPICS</b>	One x Book 'How the Olympics came to be' One x London 2012 Olympics official guidebook.
<b>DCG193</b>	<b>HISTORY OF THE OLYMPICS (2)</b>	One x Book 'How the Olympics came to be' One x London 2012 Olympics official guidebook.
<b>DCG194</b>	<b>ANCIENT GREECE</b>	One x Book 'Greek Myths & legends, seven x symbolic Greek postcards, three x A4 symbolic Greek pictures.

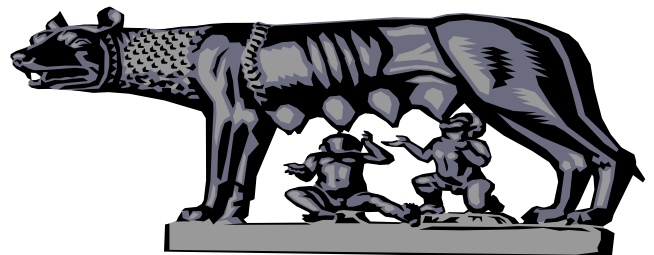
<b>DCG195</b>	<b>ANCIENT GREECE LEARNING PACK</b>	Audio CD 'Life in ancient Greece' covering theatre, Greek Gods, Religion. Also a teachers guide and picture leaflet.
<b>DCG196</b>	<b>WOMEN IN ANCIENT GREECE</b>	One x Book 'Women in Ancient Greece' One x Usborne Book 'Ancient Greeks'
<b>PCG029</b>	<b>A HORSEMAN FROM THE PARTHENON FRIEZE</b>	Poster of a mounted figure.
<b>PCG030</b>	<b>THE ACROPOLIS c400 bc</b>	Illustration of the Acropolis in Athens.
<b>PCG128</b>	<b>LONDON OLYMPICS 1948 (1)</b>	Large poster advertising London 1948 Olympics.
<b>PCG129</b>	<b>LONDON OLYMPICS 1948 (2)</b>	Large poster advertising London 1948 Olympics.
<b>PCG130</b>	<b>LONDON OLYMPICS 1948 (3)</b>	Large poster advertising London 1948 Olympics.

## Iron Age



<b>CIR008</b>	<b>MODEL OF A FARMHOUSE</b>	Model and text about the popular timber-framed Iron Age hut.
<b>CIR037</b>	<b>MODEL OF A HILLFORT</b>	Model of an Iron Age fort, and also what it looks like today.
<b>CIR198</b>	<b>IRON AGE POTTERY</b>	Pottery fragments, diagrams, postcards and information.
<b>CIR239</b>	<b>IRON AGE HILL FORT</b>	Model of a hill fort.
<b>CIR536</b>	<b>LIFE ON AN IRON AGE FARM.</b>	Pottery fragments and spinning equipment, three images, and information sheets.
<b>DIR096</b>	<b>IRON AGE LIVING</b>	Photographs of a reconstruction of life on an Iron Age settlement with information.

## The Romans



<b>CRO027</b>	<b>PLAN OF LULLINGSTONE VILLA, c 360AD</b>	Three-dimensional plan of the interior of the Roman villa.
---------------	--	--



<b>CRO030</b>	<b>MODEL OF LULLINGSTONE VILLA, c 360AD</b>	Complete model of the Kentish villa.
<b>CRO033</b>	<b>PLAN OF LULLINGSTONE VILLA, c. 280AD</b>	Three-dimensional plan with rooms identified, with seven information sheets and booklet about this villa.
<b>CRO034</b>	<b>MODEL OF LULLINGSTONE VILLA, c. 280AD</b>	Model plan of the villa.
<b>CRO045</b>	<b>MODEL OF A ROMAN ROOM WITH DECORATION</b>	Cross-sectional model of a Roman room with wall decorations and hypocaust.
<b>CRO106</b>	<b>ROMAN POTTERY</b>	Roof tile, pot, lamp and mosaic with informative text.
<b>CRO114</b>	<b>ROMAN POTTERY</b>	The making, decorating and painting of Roman pottery.
<b>CRO125</b>	<b>MODEL OF SPOONLEY WOOD VILLA, GLOS.</b>	A model of the Roman Villa with information sheets.
<b>CRO157</b>	<b>BUILDING MATERIALS</b>	Examples of building materials and diagrams on their use.
<b>CRO166</b>	<b>MODEL OF ROOM WITH DECORATION AND HEATING</b>	Reconstruction of Roman room.
<b>CRO174</b>	<b>TWO ROMAN CITIZENS</b>	Models of a Roman nobleman and his wife.
<b>CRO175</b>	<b>LIFE AT HOME</b>	Pottery, jewellery and animal remains with annotation on how they were used in the Roman home.
<b>CRO185</b>	<b>MODEL OF A ROMAN FORT</b>	Model of a Roman fort.
<b>CRO199</b>	<b>ROMAN GLASS</b>	How to make Roman glass, and the kinds of glass containers the Romans made.
<b>CRO202</b>	<b>OIL LAMPS AND LIGHTING</b>	Original lamps, oil flagon, lamp-holder and text.
<b>CRO214</b>	<b>ROMAN RELICS</b>	Pieces of Roman pottery and building materials for touching.
<b>CRO222</b>	<b>A CARPENTER'S TOOLS</b>	Original tools, pictures and text.
<b>CRO227</b>	<b>ROMAN POTTERY</b>	Examples of Samian, Coarse and Castor pottery, with explanatory text.
<b>CRO259</b>	<b>ROMAN LIFE</b>	Every day Roman objects including replica coins, lamp and jewellery
<b>CRO504</b>	<b>ROMAN COINS</b>	Genuine Roman coins with information sheet.
<b>CRO527</b>	<b>MODEL OF A MERCHANT SHIP OF SEPT. SEVERU</b>	Includes explanation of the way the Romans used ships.
<b>CRO592</b>	<b>ROMAN METALWORK</b>	Examples of Roman metalwork, and explanation of its uses.

<b>CRO594</b>	<b>JEWELLERY</b>	A Roman woman's jewellery case, with original and replica brooches and bracelets.
<b>CRO599</b>	<b>KILNS AND POTTERY</b>	Encased examples of Roman pottery with diagrams and text.
<b>CRO626</b>	<b>ROMAN HOME LIFE</b>	Roman artefacts with information sheets, a plan and recipe cards.
<b>CRO632</b>	<b>MODEL OF A LEGIONARY COMMANDER</b>	With text about his uniform.
<b>CRO636</b>	<b>ROMAN COINS</b>	Selection of genuine Roman coins with explanatory text.
<b>DRO005</b>	<b>ROMAN BRITAIN</b>	Pictures of different aspects of Roman life, with twelve information sheets.
<b>DRO006</b>	<b>ROMAN BRITAIN</b>	Pictures of different aspects of Roman life, with twelve information sheets.
<b>DRO053</b>	<b>HOW TO MAKE A ROMAN VILLA, BATHS AND SOLDIERS</b>	Three x information booklets.
<b>DRO078</b>	<b>ROMAN BRITAIN</b>	English Heritage pack with fourteen posters and information sheets.
<b>DRO177</b>	<b>TEN SOLDIERS</b>	Drawings and text about Ten different Roman Soldiers
<b>DRO204</b>	<b>ROMAN LIVES</b>	Three x information books on Roman lives, games, gods and much more.
<b>DRO205</b>	<b>ROMAN PALACES &amp; FORTS</b>	One x 'What happened here' book 'Roman Palace' One x 'Picture the past' book- Life in a Roman fort.
<b>DRO214</b>	<b>SEE INSIDE ANCIENT ROME</b>	An Usborne 'lift the flap' book- fantastic teaching aid when learning this topic.
<b>DRO215</b>	<b>SEE INSIDE ANCIENT ROME (2)</b>	An Usborne 'lift the flap' book- fantastic teaching aid when learning this topic
<b>GRO030</b>	<b>A TOGA AND A TUNIC</b>	Handleable items for trying on.
<b>PRO032</b>	<b>ROMAN BRITAIN A VERULAMIUM B</b>	A snapshot of Roman Britain "Reconstruction" drawing based on the archaeological evidence.
<b>PRO033</b>	<b>LULLINGSTONE VILLA</b>	Diagrams of Roman forts, villas and roads, showing methods of construction.
<b>PRO113</b>	<b>ROMAN ENGINEERS</b>	Large poster showing that the Romans were engineers through illustrations of their construction of such things as aqueducts and roads.
<b>RRO007</b>	<b>SOUNDS OF THE ROMAN WORLD</b>	Tape cassette and notes.

VRO048	TALKING ROMANS-HISTORY TRAIL VIDEO	Modern approach to presenting the evidence about Roman life.
VRO068	HERCULANEUM RECONSTRUCTED	DVD & book depicting before & after the disaster. <b>** Teachers are advised that this DVD contains an image of a naked statue.</b>
VRO069	POMPEII RECONSTRUCTED	DVD & book depicting before & after the disaster. <b>** Teachers are advised that this DVD contains an image of a naked statue.</b>
VRO070	POMPEII IN ART PICTURES	DVD showing 240 images of Pompeii <b>** These photos contain images of the whole of the Pompeii site, please check that some of these images are age-appropriate before showing to pupils.</b>
VRO071	DIGITAL IMAGE POSTCARDS OF POMPEII	DVD showing 240 images of Pompeii <b>** These photos contain images of the whole of the Pompeii site, please check that some of these images are age-appropriate before showing to pupils.</b>

## The Anglo-Saxons



CAS009	MODEL OF A SAXON HOUSE	Model of a Saxon house including interior with eight information cards and two leaflets.
CAS014	ANGLO-VIKING JEWELLERY	Six replica Anglo-Saxon and Viking brooches.
CAS017	A LORD AND HIS LADY	A model of a lord and his lady, with eight text cards.
CAS019	A PEASANT MAN AND WOMAN	Model of Saxon peasants working on the land.
CAS042	MODEL OF A VIKING LONG-BOAT	Model of long-boat, two books and two cassettes of Viking music & stories.
CAS247	VIKING RUNE STONE; THOR; ANGLO-SAXON DECORATION	The Franks Casket, Viking Runic Stone, Anglo-Saxon carving of Egil the Archer, a Girdle hanger and information notes.
CAS648	SAXON POTTERY	Large cremation urn and a small drinking vessel with information sheet.
CAS657	ANGLO-SAXON HELMET PLATES	Set of Helmet Plates, drinking cup and bowl with information notes.
CAS 671	Saxon/Viking Age HELMET	One reproduction helmet to try on.
CAS 672	Saxon/Viking Age HELMET	One reproduction helmet to try on.
DAS002	SAXONS AND NORMANS IN NORTH HERTFORDSHIRE CHURCHES	Multi-source pack including photographs.

<b>DAS139</b>	<b>THE KING'S TABLE (GAME)</b>	Laminated board game with pieces and instructions.
<b>DAS140</b>	<b>THE KING'S TABLE (GAME)</b>	Laminated board game with pieces and instructions.
<b>DAS218</b>	<b>SAXON IMAGES and DATA</b>	Laminated Postcards and information British Museum.
<b>DAS219</b>	<b>SAXON IMAGES and DATA</b>	Laminated Postcards and information British Museum.
<b>DAS222</b>	<b>Vikings in Britain Photo Pack</b>	16 A4 photos and teachers notes.
<b>PAS092</b>	<b>PAGE FROM THE LINDISFARNE GOSPELS</b>	Poster of an illustrated page from the Gospels.
<b>RAS010</b>	<b>SOUNDS OF THE VIKING AGE</b>	Tape cassette and notes.
<b>RAS011</b>	<b>SOUNDS OF THE VIKING AGE</b>	Tape cassette and notes.
<b>RAS012</b>	<b>SOUNDS OF THE VIKING AGE</b>	Tape cassette and notes.
<b>RAS018</b>	<b>THE BATTLE OF MALDON</b>	CD of 'The Battle of Maldon' and An introduction to the Anglo-Saxon Language plus Information sheet and poem 'The Battle of Maldon'.
<b>VAS037</b>	<b>WILLIAM THE CONQUEROR AND THE BAYEUX TAPESTRY</b>	A video explaining William the Conqueror's influence in Normandy and England.
<b>VAS049</b>	<b>TALKIN' VIKING</b>	An English Heritage video and teachers' notes.

## The Normans



<b>CNO015</b>	<b>A LORD AND HIS LADY</b>	Figures in period dress, in an acrylic case.
<b>CNO018</b>	<b>A SOLDIER IN CHAIN MAIL</b>	Figure in period dress, in an acrylic case +booklet and info card.
<b>CNO031</b>	<b>MODEL OF A VILLAGE</b>	Norman model with two books.
<b>CNO036</b>	<b>MODEL OF A MOTTE AND BAILEY CASTLE</b>	Large model in a acrylic case, with eight text cards and five booklets on the Normans.
<b>CNO135</b>	<b>A 12th CENTURY WOMAN GLEANING</b>	Model of a woman gleaning, in an acrylic case.
<b>DNO032</b>	<b>STORMING A CASTLE</b>	Sixteen laminated game sheets. Dice and counters not supplied.
<b>PNO038</b>	<b>THE NORMAN INVASION</b>	Images and text about the invasion.
<b>PNO039</b>	<b>THE NORMAN INVASION</b>	Images and text about the invasion.

<b>PNO040</b>	<b>THE NORMAN INVASION</b>	Images and text about the invasion.
<b>RNO001</b>	<b>SOUNDS FROM NORMAN TIMES: HARP AND BELLS</b>	Cassette tape of instruments from Norman times, with notes.
<b>VNO007</b>	<b>DOVER CASTLE FROM THE IRON AGE TO 1958</b>	Video produced by English Heritage.
<b>VNO050</b>	<b>CASTLE CLUES: EXPLORING THE TOWER OF LONDON</b>	A learning resource for the 8-12 age group.
<b>XNO102</b>	<b>MODEL OF A STONE KEEP ON A MOTTE</b>	Model of a stone keep.

## The Mediaeval Period



<b>CME029</b>	<b>PIECES OF ARMOUR</b>	For handling.
<b>CME039</b>	<b>MODEL OF BEAUMARIS CASTLE 1295-1330</b>	Model and information sheets: five booklets on castles, torture, punishments, arms and armour.
<b>CME107</b>	<b>MODEL OF A CRUCK-FRAME COTTAGE</b>	Includes interior with fireplace and ladder to sleeping area.
<b>CME171</b>	<b>A 14th CENTURY JESTER AND HIS BROWN BEAR</b>	Model of a jester with his performing bear.
<b>CME191</b>	<b>MODEL OF LAXTON VILLAGE, NOTTS.</b>	Model with text describing the mediaeval inhabitants.
<b>DME014</b>	<b>PLANTAGENET AND TUDOR KNIGHTS</b>	Drawings and descriptions of ten soldiers.
<b>DME025</b>	<b>THE MEDIAEVAL VILLAGE</b>	A large plan of Laxton village, with notes on mediaeval life and feudalism.
<b>DME081</b>	<b>MAKING A MEDIAEVAL MONASTERY</b>	Eight resource cards.
<b>PME021</b>	<b>KNIGHT IN ARMOUR OF MID 15th CENTURY</b>	Reconstruction of a knight in armour.
<b>PME041</b>	<b>A-B: MAGNA CARTA, 1215.</b>	2 x posters Facsimile and translation of Magna Carta.
<b>PME042</b>	<b>MEDIAEVAL CASTLES</b>	Diagrams of eleventh to fourteenth century castles. Defending and besieging a castle.
<b>VME006</b>	<b>LOOKING AT A CASTLE</b>	A video investigating different aspects of a castle.
<b>XME022</b>	<b>ARMOUR</b>	Genuine armoured breastplate for handling.

<b>XME040</b>	<b>ARMOUR, BREASTPLATE AND SHOULDER PIECE</b>	Pieces of armour for handling.
<b>XME050</b>	<b>MODEL OF A MONASTERY</b>	Model of a monastery in the 14th / 15th century.

## The Tudors



<b>CTU010</b>	<b>A MERCHANT AND HIS WIFE, 1588</b>	Figures in costume set within a room interior.
<b>CTU124</b>	<b>MODEL OF A BOX-FRAMED HOUSE</b>	A free-standing timber-framed model.
<b>CTU137</b>	<b>COUNTRYMAN EGG SELLER, LATE 16<sup>th</sup> CENTURY</b>	Model of an egg seller.
<b>CTU169</b>	<b>FARMWORKER, LATE 16th CENTURY</b>	Model of a farm worker.
<b>CTU213</b>	<b>WOMAN FARM WORKER, LATE 16th CENTURY</b>	Model of a woman farm worker.
<b>CTU651</b>	<b>TUDOR DOMESTIC LIFE</b>	Vellum lantern, lucette, trencher and wooden spoon.
<b>CTU665</b>	<b>TUDOR HOUSEHOLD CRAFTS</b>	Braiding set and instructions and hand-dyed natural wool samples.
<b>CTU666</b>	<b>TUDOR DOMESTIC HOUSEHOLD</b>	Trollen Whell, wool samples, weight, plate and spoon.
<b>CTU668</b>	<b>TUDOR TOYS</b>	Contains, stump doll, hobby horse, three streamers on a stick, a lanten rattle and an egg mill.
<b>CTU670</b>	<b>TUDOR DOMESTIC LIFE</b>	Contains; Lucette, Trencher, Wooden Spoon & Horn Cup.
<b>DTU037</b>	<b>ELIZABETH I - COSTUMER, COURTIERERS AND HOUSE</b>	Contemporary images and text about the lives of Elizabethan courtiers.
<b>DTU038</b>	<b>HENRY VIII AND HIS WIVES</b>	Contemporary images and text on Henry and his wives.
<b>DTU097</b>	<b>ELIZABETH I - HER PORTRAITS &amp; MUSIC</b>	Pictures and text about Elizabeth I, the theatre and music.
<b>DTU098</b>	<b>LIFE AT THE TUDOR COURT</b>	Images and text about people at court.
<b>DTU099</b>	<b>THE MARY ROSE</b>	Booklets, photographs and newspaper cutting about the Tudor warship.
<b>DTU100</b>	<b>TUDOR PEOPLE - BUILDINGS, TRADES AND OBJECTS</b>	Illustrated information sheets on sixteenth century topics.
<b>DTU106</b>	<b>TUDOR WARSHIPS AND MEDICINE</b>	Two 'Look Inside' booklets on warships and the Tudor medicine chest.

<b>DTU123</b>	<b>TUDOR EXPLORATION</b>	24 Page A4 Booklet "What were the effects of Tudor Exploration".
<b>DTU129</b>	<b>PIETER BRUEGEL</b>	3 Laminated Prints by the Artist and Information Notes.
<b>DTU130</b>	<b>TUDOR PORTRAITS</b>	32 Page booklet 'Tudor Portraits' & six laminated posters including – Henry VII, Elizabeth I, Sir Francis Drake and Sir Henry Unton.
<b>DTU136</b>	<b>TUDOR DRAWINGS OF PLANTS</b>	16 Laminated colour prints of Tudor plants with both their Latin and English names.
<b>DTU149</b>	<b>KING HENRY VIII &amp; HIS SIX WIVES</b>	Teachers booklet, 16 A4 pictures and a 70 x 100 cm chart looking at Henry VIII and his six wives.
<b>DTU150</b>	<b>RICH &amp; POOR IN TUDOR TIMES</b>	Teachers booklet, 16 A4 pictures and a 70 x 100 cm chart looking at the difference between rich and poor in Tudor times.
<b>DTU200</b>	<b>A TUDOR WARSHIP</b>	A 'Look inside' Book entitled ' A Tudor Warship'
<b>PTU043</b>	<b>TUDOR MONASTERY - FOUNTAINS ABBEY</b>	Illustration of a Cistercian order monastery, c. 1539.
<b>PTU045</b>	<b>ENGLAND,WALES,1579</b>	Poster version of period map.
<b>PTU046</b>	<b>A. MAP OF HERTS,1577</b>	Poster version of period maps.
<b>PTU047</b>	<b>B.ENGLAND,WALES,1579 TUDOR MAP</b>	Poster version of a period map.
<b>PTU048</b>	<b>THE MARY ROSE</b>	Poster of the Mary Rose warship.
<b>PTU050</b>	<b>KENILWORTH CASTLE 1575 DEAL CASTLE 1540</b>	Pictures and text about both castles.
<b>PTU078</b>	<b>ELIZABETHAN SEAMEN</b>	Large poster depicting four leading Elizabethan explorers with information on contemporary navigation and ship design.
<b>PTU097</b>	<b>THE TUDORS</b>	Colour poster comprising timeline, images and text.
<b>PTU100</b>	<b>TUDOR EXPLORATION</b>	Large poster looking at the effects of Tudor Exploration.
<b>PTU132</b>	<b>PETER BRUEGEL POSTER</b>	Poster showing 'Childrens games' by Peter Bruegel.

# Stuart and Georgian Britain



<b>CSG189</b>	<b>CANDLELIGHT</b>	Candlestick with candle, rushlight and snuffers.
<b>CSG224</b>	<b>MODEL OF A HOUSE</b>	Model of a Georgian house.
<b>CSG226</b>	<b>MODEL OF A HOUSE</b>	Model of a Stuart house.
<b>CSG238</b>	<b>FIREMARK AND COOKING POT</b>	Replica firemark and cooking pot.
<b>CSG542</b>	<b>FIRE INSURANCE PLAQUES</b>	Two fire marks, with explanatory text.
<b>CSG582</b>	<b>FIRE INSURANCE MARKS</b>	Two original fire marks, with explanatory text.
<b>DSG017</b>	<b>THE CIVIL WAR: TWELVE SOLDIERS</b>	Drawings and descriptions of twelve soldiers.
<b>KDSG034</b>	<b>EARLY STUART MUSIC</b>	Thirteen sheets of music, with explanatory text.
<b>DSG035</b>	<b>MUSIC FOR SAMUEL PEPYS</b>	Sheet music, and text about Samuel Pepys.
<b>DSG039</b>	<b>THE GUNPOWDER PLOT, THE GREAT FIRE AND THE PLAGUE</b>	Images and text about these three important events.
<b>DSG072</b>	<b>LONDON AND THE GREAT PLAGUE</b>	One X KS2 book ' All about the great fire of London' + info and picture sheets.
<b>DSG080</b>	<b>FIRE OF LONDON 1666</b>	Image cards and a KS2 book about this historical event.
<b>DSG118</b>	<b>THE GREAT PLAGUE AND THE GREAT FIRE</b>	Two information booklets and eleven pictures.
<b>DSG138</b>	<b>THE GUNPOWDER PLOT, THE PLAGUE &amp; THE FIRE</b>	Three x books relating to the gunpowder plot, the plague and the great fire of London.
<b>DSG162</b>	<b>THE CIVIL WAR: 12 SOLDIERS</b>	Drawings of 12 soldiers.
<b>DSG220</b>	<b>Great Fire of London Data pack Great</b>	Images and information On the Great Fire of London.
<b>DSG221</b>	<b>Fire of London Data pack</b>	Images and information On the Great Fire of London.
<b>PSG076</b>	<b>THE GREAT FIRE OF LONDON</b>	Large poster depicting the Great Fire through contemporary paintings and engravings with explanatory text.
<b>VSG060</b>	<b>FIRE &amp; FEVER</b>	DVD covering the Great fire of London & the Plague.



# Transport



<b>CTR150</b>	<b>MODEL OF A CORACLE</b>	Model of the traditional British lightweight boat.
<b>CTR197</b>	<b>MODELS OF 'PENNYDARRAN' AND 'THE ROCKET'</b>	Fine models of the two locomotives, one booklet and slide talk.
<b>CTR203</b>	<b>MODEL OF THE QUEEN MARY</b>	Model of the great ocean liner.
<b>CTR568</b>	<b>MODEL OF MGTC SPORTS CAR</b>	A detailed model of MGTC car, displayed in a acrylic case.
<b>CTR633</b>	<b>DAIMLER'S HORSELESS CARRIAGE, 1886</b>	Model of the first practical motor car.
<b>CTR669</b>	<b>PASSENGER COACH &amp; HORSES</b>	Model Victorian Passenger coach & Horses
<b>DTR065</b>	<b>TRANSPORT IN THE TWENTIETH CENTURY</b>	Eight photographs and commentary.
<b>DTR077</b>	<b>VICTORIAN TRANSPORT</b>	Four information sheets and eight A3 posters.
<b>DTR087</b>	<b>EARLY TWENTIETH CENTURY TRANSPORT</b>	Nine resource cards including photographs.
<b>DTR159</b>	<b>CANAL NARROWBOATS &amp; BARGES</b>	Shire book "Canal Narrowboats and Barges" by Tony Conder.
<b>DTR163</b>	<b>CANALS &amp; WATERWAYS</b>	HB Book, Classic photographs from The Francis Frith Collection of Canals in England.
<b>DTR165</b>	<b>REMUS THE NARROWBOAT</b>	1 book & 2 packs of postcards.
<b>DTR166</b>	<b>CANALS</b>	1 book on Canals & their uses.
<b>DTR172</b>	<b>GOLDEN AGE OF THE CRUISE LINER</b>	Information, articles & text on this luxury method of transport in the 20 <sup>th</sup> Century.
<b>PTR003</b>	<b>EARLY STEAM COACHES AND CARRIAGES</b>	2 reproductions of contemporary pictures of steam coaches.
<b>PTR058</b>	<b>A-B CANALS &amp; LIFE AFLOAT</b>	Photographs & text about life on a canal boat

# The Victorians



<b>CVI053</b>	<b>VICTORIAN WASHDAY</b>	Items used in Victorian times.
---------------	--------------------------	--------------------------------

<b>CVI061</b>	<b>VICTORIAN HOME</b>	6 household items for handling. Quart pot, candle snuffer, mincer, hand whisk, iron, iron stand.
<b>CVI117</b>	<b>19TH CENTURY DOMESTIC OBJECTS</b>	Box iron, spectacles and writing equipment.
<b>CVI118</b>	<b>STRAWPLAIT AND HAT MAKING</b>	Plait, straw-splitters and hats.
<b>CVI119</b>	<b>VICTORIAN HOUSEHOLD OBJECTS</b>	Soap, old packaging, pegs, flat iron, trivet and a carpet beater.
<b>CVI120</b>	<b>CORN DOLLIES</b>	Three corn dollies, with information about why they were made.
<b>CVI139</b>	<b>NEEDLEWORK</b>	A small sewing machine, pincushions and a sampler. With information sheet.
<b>CVI176</b>	<b>LACEMAKING AND TATTING</b>	Examples of Victorian lace making, including bobbins and images.
<b>CVI200</b>	<b>NINETEENTH CENTURY FOOD</b>	Handleable objects for preparing and eating food.
<b>CVI201</b>	<b>RUG MAKING AND WEAVING</b>	A collection of Victorian rug making and weaving tools.
<b>CVI212</b>	<b>CORN DOLLIES</b>	Three corn dollies and information about why they were made.
<b>CVI215</b>	<b>THE 19TH CENTURY KITCHEN</b>	A case containing a variety of Victorian domestic objects.
<b>CVI216</b>	<b>READING AND WRITING</b>	Slate pencils and slates, with an abacus for counting. Postcards and information sheets.
<b>CVI234</b>	<b>VICTORIAN DOMESTIC OBJECTS</b>	Six handleable objects found in a Victorian home.
<b>CVI235</b>	<b>VICTORIAN KITCHEN</b>	Seven handleable objects found in a Victorian kitchen.
<b>CVI501</b>	<b>STRAWPLAITING</b>	Examples of plait, straw-splitters, and information sheet.
<b>CVI503</b>	<b>A LADY, c1860</b>	Model of a woman wearing outdoor clothing.
<b>CVI506</b>	<b>CORN DOLLIES</b>	Three corn dollies, photo of a Thatcher, and booklet on making dollies.
<b>CVI511</b>	<b>CORN DOLLIES</b>	Three corn dollies and a photograph of a Thatcher.
<b>CVI515</b>	<b>STRAWPLAIT AND SWISS BRAIDS</b>	Plait, straw-splitters and information sheet.
<b>CVI588</b>	<b>AN EVENING AT HOME</b>	A case containing a range of objects found in a Victorian home.
<b>CVI591</b>	<b>RAG DOLL AND CHINA DOLL</b>	Two nineteenth century dolls, with information.
<b>CVI593</b>	<b>STRAWPLAIT AND SWISS BRAIDS</b>	Examples of different types of straw and plaits, and how they are made into hats.
<b>CVI604</b>	<b>AN ABACUS</b>	Handleable twentieth century learning toy with text sheet.
<b>CVI611</b>	<b>LACE-MAKING</b>	Lace samples, bobbins, and information.

<b>CVI613</b>	<b>SEWING</b>	A case of Victorian implements for sewing with samplers.
<b>CVI618</b>	<b>NEEDLEWORK</b>	Pincushion and other items with text on nineteenth century gentlewoman's needlework.
<b>CVI619</b>	<b>CORN DOLLIES</b>	Four corn dollies, and instructions about how to make one.
<b>CVI644</b>	<b>A NIGHT OUT</b>	A collection of objects used for an evening at the theatre, including curling tongs and opera glasses.
<b>CVI652</b>	<b>VICTORIAN DOMESTIC LIFE</b>	A collection of household objects used in many Victorian households.
<b>CVI658</b>	<b>VICTORIAN DOMESTIC LIFE</b>	A collection of household objects used in many Victorian households.
<b>DVI036</b>	<b>FARMING</b>	Pictures and text about farming.
<b>DVI048</b>	<b>VICTORIANS AT WORK</b>	English Heritage pack containing posters.
<b>DVI073</b>	<b>FLORENCE NIGHTINGALE</b>	Information & picture cards about the life of this Victorian lady.
<b>DVI075</b>	<b>VICTORIAN TRANSPORT</b>	Eight posters and fourteen text cards.
<b>DVI074</b>	<b>FLORENCE NIGHTINGALE</b>	8 x pictures and info sheets on Florence Nightingale.
<b>DVI095</b>	<b>COSTUME: 1861 - 1927</b>	Nine illustrations from 'Queen' magazine.
<b>DVI107</b>	<b>FLORENCE NIGHTINGALE</b>	Resource book and set of six A4 image cards.
<b>DVI108</b>	<b>FLORENCE NIGHTINGALE</b>	Resource book and set of six A4 image cards.
<b>DVI119</b>	<b>20<sup>th</sup> CENTURY FARMING</b>	Info sheets on 20 <sup>th</sup> Century farming
<b>DVI131</b>	<b>MARY SEACOLE</b>	Picture Resource Pack containing six A4 images, with information, questions and tasks for use in the classroom.
<b>DVI132</b>	<b>MARY SEACOLE</b>	Picture Resource Pack containing six A4 images, with information, questions and tasks for use in the classroom.
<b>DVI133</b>	<b>BLACK VICTORIANS</b>	1 x Hard Back Book – Ed. Jan Marsh (1996) National Portrait Gallery. Includes over 100 Black / White and Colour photographs and prints depicting Black Victorians as portrayed in the Art of the period.
<b>DVI151</b>	<b>MARY SEACOLE</b>	Children's book 'Mary Seacole' by Harriet Castor and 2 A4 prints showing Mary as a young and an elderly woman.
<b>DVI152</b>	<b>FLORENCE NIGHTINGALE</b>	Picture Resource Pack containing six A4 images, with information, questions and tasks for use in the classroom.

<b>DVI153</b>	<b>FLORENCE NIGHTINGALE</b>	Picture Resource Pack containing six A4 images, with information, questions and tasks for use in the classroom.
<b>DVI154</b>	<b>FLORENCE NIGHTINGALE</b>	Picture Resource Pack containing twelve A4 images, with information, questions and tasks for use in the classroom.
<b>GVI001</b>	<b>VICTORIAN UNDERWEAR</b>	One pair of drawers.
<b>GVI002</b>	<b>UNDERWEAR: DRAWERS</b>	Handleable split-leg drawers.
<b>GVI003</b>	<b>UNDERWEAR: DRAWERS</b>	Handleable underwear garments.
<b>GVI004</b>	<b>VICTORIAN UNDERWEAR</b>	Drawers and combinations for handling.
<b>GVI011</b>	<b>VICTORIAN BABY CLOTHES</b>	One bonnet and three dresses for handling.
<b>GVI012</b>	<b>VICTORIAN BABY CLOTHES</b>	One bib, one bonnet and two dresses for handling.
<b>GVI019</b>	<b>VICTORIAN UNDERWEAR</b>	One night-dress, one slip, one pair of split-leg drawers.
<b>GVI036</b>	<b>UNDERSKIRT</b>	Victorian shaped ladies underskirt.
<b>PVI001</b>	<b>SAMPLERS</b>	18 <sup>th</sup> & 19 <sup>th</sup> C needle work samplers
<b>PVI077</b>	<b>FLORENCE NIGHTINGALE</b>	Large poster depicting the work of Florence Nightingale through contemporary illustration & map.
<b>PVI098</b>	<b>THE VICTORIAN AGE</b>	Colour poster comprising timeline, images and text.

## World War One



<b>CWO220</b>	<b>THE WORLD WARS: MEDALS AND POSTERS</b>	Medals, filmstrips, books and posters from both World Wars, recordings, and information.
<b>DWO012</b>	<b>KEEP THE HOME FIRES BURNING</b>	World War One paperwork: ration book, letters, maps of bombing.
<b>DWO029</b>	<b>A-F WOMEN AT WORK</b>	Photographs and text about women working in World War One.
<b>PWO009</b>	<b>A-C THE FIRST WORLD WAR</b>	Three copies of World War One posters targeting women.
<b>PWO010</b>	<b>A-B THE FIRST WORLD WAR</b>	Two copies of World War One posters targeting men.
<b>PWO051</b>	<b>WW1: KITCHENER RECRUITING POSTER</b>	WW1 recruitment campaign poster.
<b>PWO067</b>	<b>YOUR BEST BOY IN KHAKI</b>	Poster to encourage women to make men enlist in the Army.

<b>PWO068</b>	<b>GOD SPEED THE PLOUGH</b>	Poster praising the Women's Land Army.
<b>RWO002</b>	<b>THE FIRST WORLD WAR REMEMBERED</b>	Cassette tape by the Imperial War Museum about World War One, with text.
<b>VWO055</b>	<b>THE GREAT WAR</b>	BBC series of DVD's

## World War Two



<b>CWT032</b>	<b>THE HOME FRONT</b>	Artefacts and primary source documents covering Britain in World War II.
<b>CWT145</b>	<b>MAKE DO AND MEND</b>	A selection of items related to sewing and mending.
<b>CWT158</b>	<b>MODEL OF THE R100 AIRSHIP</b>	Scale model in a acrylic case.
<b>CWT167</b>	<b>TWO TIN HELMETS</b>	Two handleable World War Two helmets, German and Rumanian.
<b>CWT242</b>	<b>WWII TOYS (ASSORTED)</b>	Replica 'Home Made' toys from the period. Contains – Wooden aeroplane, wooden boat; target shooting range; 2 cotton reel tanks; wooden spinning top; wooden doll; blow football; marbles; five stones game; clompers and 4 laminated information sheets.
<b>CWT243</b>	<b>WWII TOYS (ASSORTED)</b>	Replica 'Home Made' toys from the period. Contains – Wooden 'Tommy' gun, wooden boat; target shooting range; cotton reel tank; handkerchief parachute; blow football; marbles; rubber band gun; clompers and 4 laminated information sheets
<b>CWT244</b>	<b>WWII TOYS (ASSORTED)</b>	Replica 'Home Made' toys from the period. Contains – Wooden tank, wooden boat; target shooting range; wooden doll; blow football; marbles; clompers; wooden target ship; wooden 'Tommy' gun; cotton reel tank and 8 laminated information sheets.
<b>CWT245</b>	<b>WWII TOYS (ASSORTED)</b>	Replica 'Home Made' toys from the period. Contains – Wooden tank, wooden boat; target shooting range; wooden doll; blow football; marbles; clompers; wooden target ship; wooden aeroplane; cotton reel tank and 7 laminated information sheets.
<b>CWT248</b>	<b>EVACUEE'S SUITCASE</b>	Childs suitcase containing both original and replica items that a child could have taken at the time of an evacuation.

<b>CWT250</b>	<b>RAG RUGGER</b>	Everything you need to make a Rag-rug. Including instructions & Hessian for practising.
<b>CWT260</b>	<b>EVACUEES SUITCASE</b>	Items which you would have found in an evacuees suitcase.
<b>CWT263</b>	<b>EVACUEES SUITCASE</b>	Clothing which may have been found in an evacuees suitcase
<b>CWT554</b>	<b>GREETING CARD COLLECTION</b>	Examples of greetings cards form the 1930s and 40s for handling and display.
<b>DWT013</b>	<b>THE HOME FRONT, 1939-1945</b>	Fifteen World War Two documents: newspaper, recipe, list of V2 impact sites.
<b>DWT027</b>	<b>CHILDREN IN WAR</b>	6 x Photographs of children during WW2
<b>DWT028</b>	<b>A-F: ANIMALS IN WAR</b>	Six photographs of animals during World War Two, with photo of camouflaged cow.
<b>DWT030</b>	<b>A-F: FORTIES FASHION</b>	Six photographs of "Make Do & Mend" women's fashion in World War Two.
<b>DWT031</b>	<b>VICTORY BRITAIN: FROM WAR TO PEACE</b>	An Imperial War Museum activity pack.
<b>DWT057</b>	<b>WW2 –LOCAL PEOPLE</b>	Fourteen photographs and text cards about local men's experiences in the war.
<b>DWT058</b>	<b>W.W.II PART ONE: D-DAY AND BEYOND</b>	Thirty four photographs, cards and text about the war.
<b>DWT059</b>	<b>W.W.II: PART TWO, D-DAY AND BEYOND</b>	Thirty two photographs, cards and text about the war.
<b>DWT060</b>	<b>W.W.II: AFTER THE WAR</b>	Ten text sheets, photographs and statistics.
<b>DWT061</b>	<b>W.W.II: OTHER AREAS OF CONFLICT</b>	Sixteen photographs of documents.
<b>DWT062</b>	<b>WORLD WAR II: THE HOME FRONT IN HITCHIN</b>	Pictures and captions from Alan Fleck's book on Hitchin.Plus info & pictures on a Hitchin bomb shelter.
<b>DWT063</b>	<b>W.W.II: THE HOME FRONT</b>	Ten photographs and commentary.
<b>DWT070</b>	<b>W.W.II POSTER COLLECTION</b>	Six colour cards.
<b>DWT071</b>	<b>W.W.II VICTORY BRITAIN</b>	Seven information cards.
<b>DWT079</b>	<b>W.W.II</b>	Fifteen documents.
<b>DWT090</b>	<b>HITCHIN IN WORLD WAR TWO</b>	Twenty two photographs with text.
<b>DWT091</b>	<b>HITCHIN IN WORLD WAR TWO</b>	Twenty two photographs with text.
<b>DWT121</b>	<b>W.W.II AND PICTURE POST MAGAZINE</b>	Seven copies of the Picture Post 1939-1944.

<b>DWT135</b>	<b>TOYS FROM WORLD WAR 2</b>	Photo pack of toys from World War Two – includes 20 laminated colour photographs and seven laminated information sheets.
<b>DWT141</b>	<b>EVACUEES</b>	Laminated photos & an activity book
<b>DWT144</b>	<b>TOGETHER</b>	A comprehensive pack complete with video (5 films, 44 mins in total), poster, worksheets, facsimile documents and a teacher's guide focusing on the multi-cultural and overseas contribution to Britain's 2nd World War efforts.
<b>DWT145</b>	<b>TOGETHER</b>	A comprehensive pack complete with video (5 films, 44 mins in total), poster, worksheets, facsimile documents and a teacher's guide focusing on the multi-cultural and overseas contribution to Britain's 2nd World War efforts.
<b>DWT164</b>	<b>AUSCHWITZ</b>	HB Book that explores what actually happened at Auschwitz, from the time of the Nazi invasion of Poland in 1939 through to the liberation of the camp by Soviet forces in 1945. '...a book that every young person should read and remember.'
<b>DWT168</b>	<b>THE STORY OF THE HOLOCAUST</b>	SB Book Exploring how the Holocaust in Europe was made possible and if it could happen again. "Those who do not learn the lessons of History will be forced to relive them"
<b>DWT170</b>	<b>D-DAY</b>	Imperial War Museum pack with audio CD and information contained within a book.
<b>DWT181</b>	<b>HOME FRONT</b>	Leaflets, tickets & guidebooks from during & after WW2
<b>DWT198</b>	<b>WARTIME FOOD</b>	'We'll eat again' wartime recipe book
<b>DWT203</b>	<b>AT HOME IN WORLD WAR 2</b>	3 x books containing, info & pictures on the Blitz, food & propaganda
<b>GWT010</b>	<b>WORLD WAR II BABY CLOTHING</b>	Seven examples of hand-made and manufactured baby clothing.
<b>GWT023</b>	<b>1940s WOMAN'S DRESS</b>	Black dress with padded shoulders and beaded lapels, for handling.
<b>GWT024</b>	<b>CIVIL DEFENCE CORPS UNIFORM</b>	A military uniform for handling.
<b>GWT025</b>	<b>NURSE'S UNIFORM</b>	Circa 1940-50. Medical costume with red cross symbols on apron and hat for handling.
<b>GWT027</b>	<b>RAF UNIFORM</b>	Handleable military costume.
<b>GWT037</b>	<b>PARADE COAT</b>	W.W.II Army parade coat.
<b>GWT045</b>	<b>WW2 KNITTED CHILDS CLOTHES</b>	A Pullover, a balaclava & a knitted vest from WW2
<b>PWT011</b>	<b>A-D: THE SECOND WORLD WAR</b>	Four laminated, replica colour posters.
<b>PWT012</b>	<b>A-E: THE SECOND WORLD WAR</b>	British and American military propaganda posters.

<b>PWT019</b>	<b>A-E: THE SECOND WORLD WAR</b>	Posters focusing on promoting the war effort at home.
<b>PWT069</b>	<b>W.W.II: GAS ATTACK!</b>	Poster with instructions on when and how to use a gas mask.
<b>PWT070</b>	<b>V1 ATTACKS ON KENT UP TO SEPT 1944</b>	Map of 2,400 flying-bomb impacts on Kent.
<b>PWT071</b>	<b>THE SQUANDER BUG</b>	Reproduction of W.W.II poster - 'Don't waste your money!'
<b>PWT072</b>	<b>OXO: OUR FAVOURITE DISH!</b>	Advertisement poster.
<b>PWT073</b>	<b>OXO: MY SCHOOL LUNCH!</b>	Advertisement poster.
<b>RWT003</b>	<b>LIFE IN BRITAIN 1939-1945: RECOLLECTIONS</b>	Cassette tape by Imperial War Museum, reminiscences of World War Two and notes.
<b>RWT004</b>	<b>THE SECOND WORLD WAR</b>	Two cassettes of radio recordings during W.W.II, with notes.
<b>RWT005</b>	<b>WE'LL MEET AGAIN - VERA LYNN</b>	CD and book of 1940s popular music.
<b>RWT019</b>	<b>SONGS THAT WON THE WAR</b>	3 x Imperial War Museum CD's commemorating VE day
<b>VWT063</b>	<b>BRITAINS HOME FRONT</b>	3 x DVD's showing footage & interviews from the war years.

## Seaside Holidays



<b>DSE003</b>	<b>SEABIRDS</b>	Coloured photographs of birds.
<b>DSE045</b> <b>DSE46</b>	<b>SEASIDE HOLIDAYS</b> <b>SEASIDE HOLIDAYS</b>	Pictures and photocopies of holiday photographs from early to mid twentieth century.
<b>DSE047</b>	<b>SEASIDE HOLIDAY PHOTOS</b>	Photographs of holidays from early to mid twentieth century.
<b>DSE054</b>	<b>SUMMER PASTIMES</b>	Data pack illustrating twentieth century leisure activities.
<b>DSE055</b>	<b>SUMMER PASTIMES</b>	Data pack illustrating twentieth century leisure activities.
<b>DSE056</b>	<b>SEASIDE LEISURE &amp; NATURE</b>	Data pack illustrating twentieth century leisure activities. Plus 2 x books aimed at younger children 'seaside Nature' & 'The seaside-then & now'.



<b>DSE092</b>	<b>SEASIDE HOLIDAYS IN THE PAST</b>	English Heritage pack containing eight detailed photos of seaside scenes from the Victorian period and the 1930s to 1950s with teacher's notes.
<b>DSE093</b>	<b>SEASIDE HOLIDAYS IN THE PAST</b>	English Heritage pack containing eight detailed photos of seaside scenes from the Victorian period and the 1930s to 1950s with teacher's notes.
<b>DSE094</b>	<b>SEASIDE HOLIDAYS IN THE PAST</b>	English Heritage pack containing eight detailed photos of seaside scenes from the Victorian Period and the 1930s to 1950s with teacher's notes.
<b>DSE109</b>	<b>SEASIDE HOLIDAYS IN THE PAST</b>	English Heritage pack containing eight detailed photos of seaside scenes from the Victorian Period and the 1930s to 1950s with teacher's notes.
<b>DSE111</b>	<b>SEASIDE HOLIDAYS IN THE PAST</b>	Collection of original photographs from the early to mid twentieth century.
<b>DSE112</b>	<b>SEASIDE HOLIDAYS IN THE PAST</b>	Collection of original photographs from the early to mid twentieth century.
<b>DSE113</b>	<b>SEASIDE HOLIDAYS IN THE PAST</b>	Collection of original photographs from the early to mid twentieth century.
<b>DSE116</b>	<b>SEASIDE HOLIDAYS IN THE PAST</b>	Collection of original photographs from the early to mid twentieth century.
<b>DSE117</b>	<b>SEASIDE HOLIDAYS IN THE PAST</b>	Collection of original photographs from the early – mid Twentieth century + photo album
<b>DSE169</b>	<b>SEASIDE IN THE 70'S</b>	15 x Laminated photographs showing a visit to the seaside in the 70's.
<b>DSE171</b>	<b>SEASIDE HOLIDAYS OF THE PAST</b>	11 x replica leaflets & programs showing how a holiday would have looked in the 1930's-60's
<b>DSE175</b>	<b>SEASIDE PHOTOS OF THE 19<sup>TH</sup> AND 20<sup>TH</sup> CENTURY</b>	Copies of seaside photographs from the 19 <sup>th</sup> & 20 <sup>th</sup> Century
<b>DSE176</b>	<b>SEASIDE PHOTOS</b>	Copies of seaside photographs from the 19 <sup>th</sup> and 20 <sup>th</sup> Century
<b>DSE197</b>	<b>AT THE SEASIDE</b>	2 x Books 'The Seaside- now & then' & Seaside wildlife'.
<b>GSE031</b>	<b>1950'S SWIMMING COSTUME</b>	One swimming costume and information sheets.
<b>GSE046</b>	<b>1970's SWIMSUIT</b>	One piece ladies swimsuit + leaflet
<b>VSE062</b>	<b>SEASIDE MEMORIES DVD</b>	DVD with footage of Britains seascides from 1930'1960
<b>VSE064</b>	<b>BRITISH SEASIDE MEMORIES (1)</b>	DVD with footage of the British seaside
<b>VSE065</b>	<b>BRITISH SEASIDE MEMORIES (2)</b>	DVD with footage of the British seaside
<b>VSE066</b>	<b>BRITISH SEASIDE MEMORIES (3)</b>	DVD with footage of the British seaside

VSE067 BRITISH SEASIDE MEMORIES (4)

DVD with footage of the British seaside

## Life in Twentieth Century Britain



CLB517 SEWING SAMPLERS

Examples of sewing stitches in a sampler book, for handling.

CLB645 TWENTIETH CENTURY LEISURE

Two photographic albums containing leisure activities.

DLB045 SEASIDE HOLIDAYS

Pictures and photocopies of holidays from early to mid twentieth century

DLB064 BRITAIN SINCE 1930

Seventeen photographs and commentary.

DLB067 THE 1950's - LOCAL NEWSPAPER EXTRACTS AND ADVERTS

Twenty two information sheets.

DLB068 THE 1950's - LOCAL NEWSPAPER EXTRACTS AND ADVERTS

Twenty two information sheets.

DLB120 LIVING IN THE 1970's

Two original copies of 'Annabel' magazine from 1976.

DLB167 CHILDRENS BOOKS

3 Childs annuals from 1971

DLB174 THE 1950'S AND 60'S HOUSEHOLD

Replica leaflets and information showing what life was like in the 1930's-60's

DLB179 BRITAIN IN THE 50'S

3 Books: This is London, The 1950's home, Festival of Britain guidebook. + 5 postcards

DLB180 BRITAIN IN THE 50'S (2)

Tiddlywinks booklet on Queen Elizabeth, Festival of Britain booklet, Gift brochure, 5 x postcards

GLB005 EARLY TWENTIETH CENTURY COSTUME

One lace baby's gown and one flannelette baby's dress.

GLB006 1950's BOY'S CLOTHING

Cap, gloves and liberty bodice from the mid 1950s.

GLB026 1960's LADIES CLOTHES

Typical patterned shift and cream and black trouser suit.

GLB032 1950's COCKTAIL DRESS

Two piece, black 1950's dress.

GLB033 1950's NIGHT-DRESS

A ladies cotton nightdress from the 1950's

<b>GLB035</b>	<b>1920's EVENING DRESS</b>	One ladies, gold coloured evening dress.
<b>GLB039</b>	<b>1950's GIRLS DRESS</b>	Dress and dolls dress from the 1950's
<b>GLB043</b>	<b>1970's LADIES DAY DRESS &amp; BELT</b>	Ladies blue 70's dress & belt.
<b>PLB049</b>	<b>BRITISH FOOD</b>	The varieties of food we have eaten over the past 2000 years.
<b>PLB064</b>	<b>1953 - 1960: HOW WE USED TO LIVE</b>	Includes information on rock 'n' roll, immigration and the Coronation.
<b>PLB086</b>	<b>TRADITIONAL BRITISH CRAFTS</b>	Three posters, A-C, illustrating thatching, saddlery and a blacksmith at work.
<b>PLB105</b>	<b>FRONT PAGE HEADLINES</b>	4 large posters showing the front pages of contemporary newspapers, Coronation, Everest, 1966 World Cup and Moon Landing.
<b>PLB106</b>	<b>FRONT PAGE HEADLINES</b>	4 large posters showing the front pages of contemporary newspapers, Coronation, Everest, 1966 World Cup and Moon Landing.
<b>PLB107</b>	<b>FRONT PAGE HEADLINES</b>	4 large posters showing the front pages of contemporary newspapers, Coronation, Everest, 1966 World Cup and Moon Landing.
<b>PLB108</b>	<b>FRONT PAGE HEADLINES</b>	4 large posters showing the front pages of contemporary newspapers, Coronation, Everest, 1966 World Cup and Moon Landing.
<b>PLB122</b>	<b>1966 WORLD CUP VICTORY!</b>	Poster showing football stars of 1966 celebrating their world cup win.

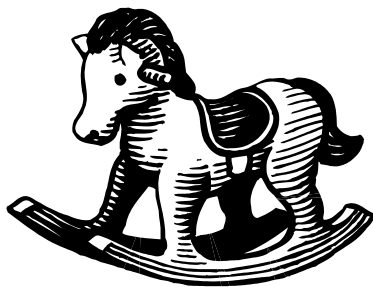
## North Hertfordshire in the 19<sup>th</sup> & 20<sup>th</sup> Centuries



<b>DNH011</b>	<b>ROYSTON FROM THE AIR IN THE 1960s</b>	Twelve photographs and text on different views of Royston.
<b>DNH023</b>	<b>THERFIELD HEATH PAST AND PRESENT: 1899-1980</b>	Fourteen photographs showing Royston life over 100 years.
<b>LNH001</b>	<b>HITCHIN TRANSPORT AND VEHICLES</b>	Eleven photographs of different types of transport, late nineteenth to early twentieth century.

<b>LNH002</b>	<b>HITCHIN MARKET SCENES</b>	Ten photographs of Hitchin Marketplace.
<b>LNH003</b>	<b>HITCHIN TOWN DEVELOPMENT</b>	Nine photographs showing how Hitchin has grown.
<b>LNH004</b>	<b>HITCHIN OCCUPATIONS</b>	Nine photographs of people working in Victorian and Edwardian Hitchin.
<b>LNH005</b>	<b>HITCHIN SHOPS</b>	Seven photographs of differing building styles.
<b>LNH006</b>	<b>HITCHIN BUILDINGS AND STREETS</b>	Eleven photographs of different building types, and street scenes.
<b>LNH007</b>	<b>HITCHIN BUILDINGS AND STREETS</b>	Eleven photographs of different building types, and street scenes.
<b>LNH008</b>	<b>HITCHIN BUILDINGS AND STREETS</b>	Sixteen photographs of different types of buildings.
<b>LNH009</b>	<b>HITCHIN BUILDINGS AND STREETS</b>	Twelve photographs of different types of buildings
<b>LHN010</b>	<b>HITCHIN MARKETS</b>	Eleven photographs showing how Hitchin market has changed.
<b>LNH011</b>	<b>HITCHIN STREETS OLD AND NEW</b>	Fourteen photographs showing how Hitchin streets have changed.
<b>LNH012</b>	<b>HITCHIN STREETS OLD AND NEW</b>	Fourteen photographs showing how Hitchin streets have changed.
<b>LNH013</b>	<b>HITCHIN TRANSPORT AND VEHICLES</b>	Eleven photographs of late nineteenth and early twentieth century vehicles, horse and cart to car.
<b>LNH014</b>	<b>HITCHIN TRANSPORT AND VEHICLES</b>	Ten photographs of different types of transport, including train and car.
<b>LNH015</b>	<b>HITCHIN STREET SCENES</b>	Eight photographs of Hitchin streets from late 19th to early 20th centuries.
<b>LNH016</b>	<b>HITCHIN BUILDINGS</b>	Thirteen photographs of different buildings in Hitchin.
<b>LNH017</b>	<b>NORTH HERTS FARMING AROUND 1900</b>	Eight photographs of different aspects of nineteenth century agriculture.
<b>LNH018</b>	<b>NORTH HERTS FARMING AROUND 1900</b>	Eight photographs of people working on farms in North Herts.
<b>LNH019</b>	<b>HITCHIN MARKETS 1853-1923</b>	Fifteen photographs of market scenes.
<b>PNH031</b>	<b>TRADITIONAL BRITISH CRAFTS</b>	Three posters, A-C, illustrating thatching, saddlery and a blacksmith at work.

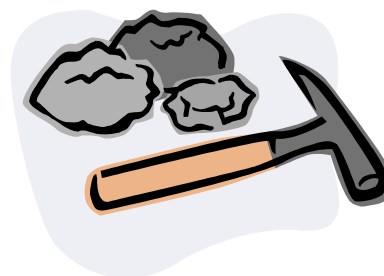
## Toys



<b>CTO109</b>	<b>NORTH AMERICAN INDIAN CHIEF AND HORSE</b>	Stuffed toys from the twentieth century. & 2 info sheets
<b>CTO141</b>	<b>FARMYARD ANIMALS</b>	Various examples of farmyard animals in a acrylic case.
<b>CTO152</b>	<b>CRAP SHOOTING MONKEY, TIN TOY</b>	1950s dice throwing, battery operated toy. In poor condition and does not work, but lovely example to look at.
<b>CTO183</b> Renumbered <b>CTO678</b>	<b>JIGSAW PUZZLES FROM THE 1970'S</b>	8 x Children's jigsaw puzzles from the 1970s.
<b>CTO209</b>	<b>'AERIAL POST' BOARD GAME</b>	Board game showing the British Empire of the 1920s.
<b>CTO217</b>	<b>RAG DOLL</b>	Twentieth century home-made doll with text.
<b>CTO233</b>	<b>1950S DOLL'S PRAM</b>	An original doll's pram dating from the 1950's
<b>CTO236</b>	<b>OPTICAL TOYS</b>	Handleable objects including a zoetrope and magic lantern slides.
<b>CTO246</b>	<b>MECCANO SET</b>	Meccano construction set. Built as crane, with spares, construction tools and note sheets.
<b>CTO265</b>	<b>TOY CARS</b>	A selection of 8 old toy cars
<b>CTO258</b>	<b>JIGSAW PUZZLES</b>	7 X Jigsaw puzzles from the 1970's
<b>CTO507</b>	<b>BUILDING BRICKS, 1908 – 1912</b>	Encased building bricks displayed with German manufacturer's illustration and text about the child owner.
<b>CTO509</b> <b>CTO514</b>	<b>GLORIA MOSAIC TWO BOARD GAMES</b>	Example of a pattern making game with information. Lotto, a game of number, and Shake the Word, a letter game, with information. For handling.
<b>CTO532</b>	<b>DRINKING BEAR, WIND-UP TOY</b>	A period mechanical toy, held in a acrylic case.
<b>CTO534</b>	<b>TOY CARS</b>	A collection of toy cars for handling, with information.
<b>CTO548</b>	<b>JIGSAW PUZZLE</b>	Children's jigsaw puzzle from the 1970s.

<b>CTO550</b>	<b>TOY BRICKS</b>	Toy building bricks from early twentieth century for handling, with information sheets.
<b>CTO551</b>	<b>JIGSAW PUZZLE</b>	Children's jigsaw puzzle from the 1970s.
<b>CTO572</b>	<b>THE JABBERWOCK, WIND-UP TOY</b>	Mechanical crocodile toy with text.
<b>CTO573</b>	<b>THE HILL BILLY, WIND-UP TOY</b>	1960s toy man in a acrylic case.
<b>CTO575</b>	<b>TOY SEWING MACHINE</b>	A working toy from the 1950s with original box and instructions.
<b>CTO576</b>	<b>DRINKIN' MAN, WIND-UP TOY</b>	1950s mechanical toy accompanied by an information pack.
<b>CTO614</b>	<b>SOOTY XYLOPHONE</b>	Handleable instrument with preserved packaging and text card.
<b>CTO616</b>	<b>DUCK MECHANICAL TOY</b>	Working wind-up model of a duck on a bicycle.
<b>CTO628</b>	<b>TOY VICTORIAN THEATRE</b>	Assembled cardboard toy theatre for handling.
<b>CTO631</b>	<b>ROVER THE POODLE TOY</b>	A battery operated tin toy.
<b>CTO641</b>	<b>PEGITY</b>	A corking and beading kit manufactured by Parker Games with two information sheets.
<b>CTO642</b>	<b>BAYKO KIT</b>	Child's construction kit with three information sheets.
<b>CTO643</b>	<b>WOODEN JIGSAW</b>	Jigsaw for handling
<b>CTO671</b>	<b>EARLY 20<sup>TH</sup> CENTURY DOLLS HOUSE FURNITURE</b>	Doll & dolls house furniture from the early 20 <sup>th</sup> century
<b>CTO678 DTO104</b>	<b>JIGSAW PUZZLES FROM THE 1970'S TOYS</b>	8 x puzzles from the 1970's Resource book and set of 16 A4 image cards.
<b>DTO114</b>	<b>TOY PHOTOGRAPHS</b>	Collection of original photographs from the early to mid twentieth century.
<b>DTO115</b>	<b>TOY PHOTOGRAPHS</b>	Collection of original photographs from the early to mid twentieth century.
<b>DTO128</b>	<b>NINETEENTH CENTURY DOLLS</b>	24 Picture Postcards and Information Notes.

# Geology



<b>CGE020</b>	<b>MODEL OF A GIANT BISON,</b>	Realistic model of Bison Latifrons held in an acrylic case.
<b>CGE051</b>	<b>MODEL OF A TRICERATOPS</b>	Large model held in an acrylic case.
<b>CGE144</b>	<b>LOCAL FOSSILS</b>	Includes ammonites and belemnites and explanatory sheet.
<b>CGE173</b>	<b>ECONOMIC MINERALS</b>	Twelve handleable samples of ore and useful minerals.
<b>CGE266</b>	<b>FOSSIL BOX 1</b>	Selection of 12 fossils in case
<b>CGE267</b>	<b>FOSSIL BOX 2</b>	Selection of 12 fossils in case
<b>CGE268</b>	<b>FOSSIL BOX 3</b>	Selection of 12 fossils in case
<b>CGE269</b>	<b>FOSSIL BOX 4</b>	Selection of 12 fossils in case
<b>CGE270</b>	<b>FOSSIL BOX 5</b>	Selection of 12 fossils in case
<b>CGE520</b>	<b>ROCK SAMPLES: PRE-CAMBRIAN TO SILURIAN</b>	Eight handleable rock samples, with four maps and information cards.
<b>CGE522</b>	<b>GLACIAL DEPOSITS IN HOLWELL QUARRY</b>	Handleable fossils from a North Hertfordshire site.
<b>CGE563</b>	<b>FOSSILS</b>	Handleable fossils including sharks' teeth and belemnites.
<b>CGE585</b>	<b>ROCK SAMPLES: CARBONIFEROUS – DEVONIAN</b>	Handleable rock and fossil samples.
<b>CGE589</b>	<b>MODEL OF A DIPLODOCUS</b>	Model, filmstrip and text.
<b>CGE634</b>	<b>LOCAL BUILDING MATERIALS</b>	Building materials and the buildings for which they are used.
<b>PGE091</b>	<b>A-E. PREHISTORIC REPTILES, FISH AND BIRDS</b>	Five posters of dinosaurs, from Pterodon to Ichthyosaur.
<b>PGE114</b>	<b>A – Z OF HERBIVOROUS DINOSAURS</b>	Large poster illustrating Herbivorous dinosaurs.
<b>PGE115</b>	<b>A – Z OF CARNIVOROUS DINOSAURS</b>	Large poster illustrating Carnivorous dinosaurs.

<b>PGE116</b>	<b>HISTORY OF LIFE ON EARTH</b>	Large poster illustrating the history of life on Earth from the Vendian to the Quaternary periods.
<b>XGE023</b>	<b>GLASS</b>	The elements of glass manufacture.
<b>XGE036</b>	<b>CHALK FOSSILS</b>	Examples of fossils, with explanatory sheet.

## Geography



<b>CGY541</b>	<b>CEREALS</b>	Examples of different cereals, with photographs.
<b>CGY620</b>	<b>THE COCOA BEAN</b>	The story of cocoa, from the bean to the chocolate bar.
<b>PGY075</b>	<b>RIVERS</b>	Large poster illustrating the life of a river and associated landscape features in the UK and the World.
<b>PGY081</b>	<b>RIVERS AND COASTS OF THE BRITISH ISLES</b>	Poster depicting map of the British Isles marked with coastal profiles and major rivers.
<b>XGY012</b>	<b>WOOL FROM THE ANGORA GOAT</b>	Examples of Angora wool before and after spinning; three booklets about wool.
<b>XGY018</b>	<b>THE COCOA BEAN</b>	Models, images and text on how cocoa beans are made into chocolate.
<b>XGY025</b>	<b>COTTON</b>	How the textile is made, and what it is used for.



## Other Cultures – Canada, North & South Americas



<b>CCC179</b>	<b>LEATHER AND BEADWORK FROM THE APACHE TRIBE</b>	Pipe bag, beadwork and head-dress, with postcards and information.
<b>CCC262</b>	<b>AZTEC DEATH MASK</b>	Ornamental Copy of a triple death mask with info, care should be used when borrowing this as it is fragile.
<b>CCC650</b>	<b>AZTEC CALENDAR</b>	Replica Aztec calendar (sun stone) and pottery Ocarina with info sheets
<b>CCC667</b>	<b>AZTECS</b>	Pottery mask, Printing stamp, Bark paper, Pestle & Mortar and Grinding Stone
<b>CCC670</b>	<b>MAYA ARCHAEOLOGY BOX</b>	Artefacts from MAYA culture inc Cocoa beans and incense, sculpture and pottery
<b>DCC 223</b>	<b>MAYA TIME LINE</b>	X14 Sheets detailing the Maya history.
<b>DCC 224</b>	<b>MAYA INFO PACK AND TEACHERS NOTES</b>	X17 A3 Info sheets andx14 A4 teachers notes and work sheets
<b>DCC019</b>	<b>CANADIAN CRAFTWORK</b>	Three posters on the Wood Cree, Naskapi and Assiniboine tribes each with notes.
<b>VCC045</b>	<b>LOST CIVILISATIONS: MAYA AND INCA</b>	A Reader's Digest video.

## Other Cultures – Africa



<b>CCS133</b>	<b>SOUTH AFRICAN CRAFT WORK</b>	Two grass baskets, two grass spoons and two coconuts in their pods.
<b>CCS261</b>	<b>AFRICAN LIFE</b>	Tin burner, Rattan fan, beadwork & batik- with info

**CCS553 SOUTH AFRICAN BEAD AND LEATHER WORK**

A beadwork bag,, and two necklaces with 10 information sheets.

**CCS565 SOUTH AFRICAN BEAD AND LEATHER WORK**

One necklace, apron, and a bead-covered gourd,

**GCS040 GIRLS DRESS**

African print girls Dress

**GCS041 GIRLS DRESS**

West African print girls dress

**GCS042 BOYS CLOTHING**

West African print boys clothes

## Other Cultures – Asia



**PCA055 A-C: JAPANESE PRINTS: FROG, WOMEN, TIGER**

Three Japanese prints of a frog, a tiger, and a group of women.

**XCA013 ORIENTAL LADIES' SHOES**

Three pairs of delicate shoes, encased.

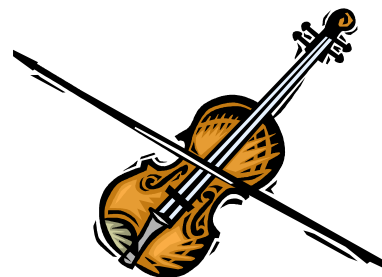
**XCA014 JAPANESE TEA**

Japanese tea items including bowl, bamboo whisk & stirrer- with info sheets.

**GCA038 SHOES**

Chinese silk ladies shoe (foot binding) with Western European children's shoes for comparison.

## The Arts



**DAR088 PORTRAITS**

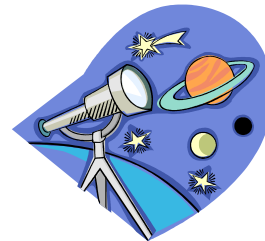
Twelve photographs of people from the early Twentieth Century.

**DAR134 MASKS FROM AROUND THE WORLD**

9 Laminated pictures of traditional masks with notes on the influence of African Masks on Picasso's 'Les Femmes d'Alger'.

<b>DTU129</b>	<b>PIETER BRUEGEL</b>	3 Laminated Prints by the Artist and Information Notes.
<b>DTU130</b>	<b>TUDOR PORTRAITS</b>	32 Page booklet 'Tudor Portraits' & 6 laminated posters including – Henry VII, Elizabeth I, Sir Francis Drake and Sir Henry Unton.
<b>DVI133</b>	<b>BLACK VICTORIANS</b>	1 x Hard Back Book – Ed. Jan Marsh (1996) National Portrait Gallery. Includes over 100 Black / White and Colour photographs and prints depicting Black Victorians as portrayed in the Art of the period.
<b>DAR137</b>	<b>TUDOR DRAWINGS OF PLANTS</b>	16 Laminated colour prints of Tudor plants with both their Latin and English names.
<b>DAR199</b>	<b>HENRI MATISSE</b>	Pictures and info relating to Henri Matisse
<b>PTU132</b>	<b>PETER BRUEGEL</b>	Poster of Peter Bruegels ' Childrens games' 1590AD

## Space



<b>DSP182</b>	<b>SPACE</b>	Stargazing guide, Usborne fact cards, 4 x space related postcards.
<b>DSP183</b>	<b>SPACE</b>	Stargazing guide, Usborne fact cards, 4 x space related postcards.
<b>DSP250</b>	<b>Space EXPLORATION</b>	Images and information from Science Museum.
<b>CSP255</b>	<b>3D SOLAR SYSTEM</b>	9 X 3D planets +Sun & Usborne book.
<b>CSP662</b>	<b>INFLATABLE SOLAR SYSTEM</b>	9 inflatable planets plus foot pump and work book.
<b>PSP034</b>	<b>EUROPE AT NIGHT</b>	Large poster showing Europe at night taken from space.
<b>PSP079</b>	<b>THE LIVING EARTH</b>	A Topographical satellite map.
<b>PSP110</b>	<b>GUIDE TO THE NIGHT SKY</b>	2 posters that join together to depict the night sky as it appears in the northern hemisphere.
<b>PSP111</b>	<b>THE NIGHT SKY</b>	Poster illustrating the night sky as seen from the northern and southern hemispheres.
<b>PSP112</b>	<b>THE MOON</b>	Poster illustrating the moonscape from both its Near and Far side.

# Science



## CSC249 THE HISTORY OF LIGHTING

An interesting box containing examples of lighting throughout the ages, including a Roman oil lamp & a tudor oil lamp, with instruction/information booklet.