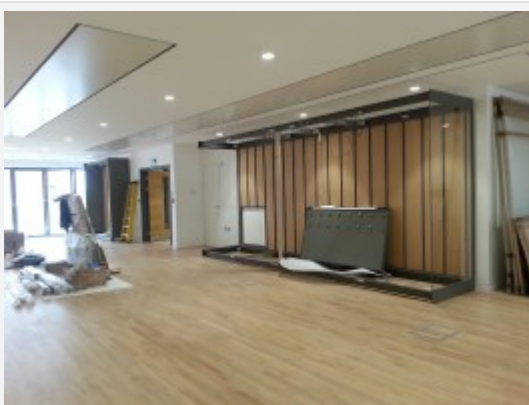




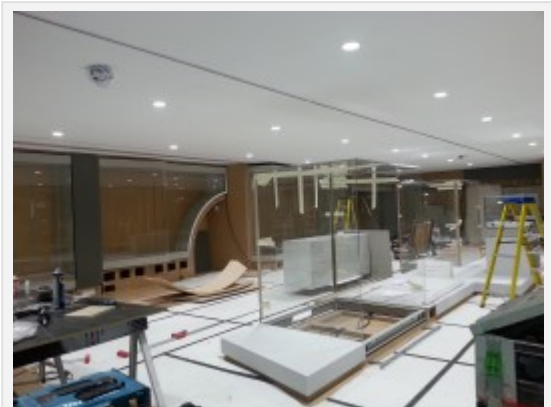
The lettering with our name is now up at the entrance

The museum now has its name looking very smart on the stone slab at the front of the new glass entrance. The Gill Sans lettering is nice and large, so no-one should miss us. Inside, things are moving on. Alan and Ian from Armour Systems have been working really hard installing our amazing new showcases, each one purpose-made for the objects we'll display. Thanks to the Heritage Lottery Fund for grant-aiding the museum fit-out. The showcases in the first floor gallery are almost complete, and the Terrace Gallery is getting there.



Cases on the Terrace Gallery under construction

Yesterday a team from Conservation by Design moved in and set up a



The first floor gallery, with centre cases in place

processing
area in the
temporary
exhibition
gallery, where
they are
photographin
g and
measuring
every object.
This is to
ensure that
the mounts on
which items
will be
displayed will
fit each object
exactly.
Mounts to
hold the
lighter objects
will be
perspex, those
for heavier
items will be
made of steel.



Iwan, Gwen and Caroline from Conservation by Design ensuring that the mounts for displaying our objects are all a perfect fit



Part of the new secure art store

We also now have a new art store, ready for paintings from both museums. Kate, Gill and Brenda have almost finished carefully wrapping and labelling the pictures, which will be moved shortly

On the ground floor, our new technician Mark Hazelgrove has sorted out the workshop, and is now putting up racking for the stores.



Paintings wrapped and labelled ready for the move



Technician Mark in the new workshop

The curators are busy checking and proof-reading the labels, re-checking, re-proofing, re-writing, finding illustrations and graphics at short notice. A huge amount of unseen work has gone into the labels for this museum, and I'll give it a separate blog post. Finally, we welcome Sarah Burrows back to Hitchin Museum, to work with Sharon. Sarah is covering Lisa Ferridge's secondment to the NHDC Finance Dept.

North Herts. Museum Update – Inside and out

Share this:

Email

Print

Facebook

Twitter

Pocket

WhatsApp

Pinterest

Reddit